

Box Score

file:///F:/Game%20%233%20Second%20Half.htm

Game 3 final

Date: 3/20/2012
Time: 1:08 pmArena:
City, State:

VISITOR: Erie Community College ()

| NO | PLAYER | TOT-FG | | | | | 3-PT | | REBOUNDS | | | | | | | S | MIN | |
|---------------|-------------------|--------|----|-----|----|-----|------|-----|----------|-----|-----|----|----|---|----|---|-----|-----|
| | | P | FG | FGA | FG | FGA | FT | FTA | OFF | DEF | TOT | PF | TP | A | TO | | | BK |
| 2 | Emmitt, Brandon | * | 5 | 11 | 4 | 10 | 4 | 4 | 1 | 2 | 3 | 3 | 18 | 2 | 1 | 0 | 1 | 34- |
| 13 | Ogbonna, Uche | * | 6 | 13 | 1 | 1 | 3 | 3 | 3 | 2 | 5 | 3 | 16 | 0 | 1 | 0 | 2 | 29+ |
| 15 | Jones, Dequan | * | 8 | 14 | 3 | 7 | 0 | 0 | 3 | 9 | 12 | 3 | 19 | 3 | 6 | 0 | 1 | 36- |
| 24 | Denis, Vandell | * | 8 | 12 | 1 | 2 | 0 | 0 | 0 | 2 | 2 | 3 | 17 | 0 | 1 | 0 | 1 | 31- |
| 34 | Edukugho, Eymofee | * | 3 | 7 | 0 | 0 | 4 | 6 | 3 | 4 | 7 | 2 | 10 | 1 | 4 | 1 | 0 | 34- |
| 1 | Young, Darale | | 2 | 3 | 0 | 0 | 0 | 0 | 1 | 0 | 1 | 0 | 4 | 0 | 0 | 0 | 0 | 4+ |
| 3 | Sule, Haruna | | 0 | 0 | 0 | 0 | 0 | 0 | 0 | 0 | 0 | 0 | 0 | 0 | 0 | 0 | 0 | 3- |
| 4 | Jenkins, Jahmill | | 0 | 1 | 0 | 1 | 0 | 0 | 0 | 0 | 0 | 1 | 0 | 0 | 0 | 0 | 0 | 6+ |
| 10 | Haynes, Shannon | | 0 | 1 | 0 | 0 | 0 | 0 | 0 | 1 | 1 | 0 | 0 | 0 | 0 | 0 | 0 | 6+ |
| 21 | Hattin, Sam | | 0 | 2 | 0 | 1 | 0 | 1 | 0 | 1 | 1 | 3 | 0 | 0 | 1 | 0 | 0 | 12+ |
| 31 | Sumlin, Rayshawn | | 0 | 0 | 0 | 0 | 0 | 0 | 0 | 0 | 0 | 1 | 0 | 0 | 0 | 0 | 0 | 1+ |
| 32 | Gordon, Travaughn | | 0 | 0 | 0 | 0 | 0 | 0 | 1 | 0 | 1 | 0 | 0 | 0 | 1 | 0 | 0 | 1+ |
| 33 | Mason, Anthony | | 0 | 0 | 0 | 0 | 0 | 0 | 1 | 0 | 1 | 1 | 0 | 1 | 0 | 0 | 0 | 3- |
| TEAM REBOUNDS | | | | | | | | | 1 | 1 | 2 | | | | | | | |
| Team Totals | | | 32 | 64 | 9 | 22 | 11 | 14 | 14 | 22 | 36 | 20 | 84 | 7 | 15 | 1 | 5 | 200 |

Total FG% - 1st: 19/36 0.528 2nd: 13/28 0.464 Game: 0.500 Deadball
 3-PT FG% - 1st: 5/12 0.417 2nd: 4/10 0.400 Game: 0.409 Rebounds
 Total FT% - 1st: 4/6 0.667 2nd: 7/8 0.875 Game: 0.786 (1,0)

HOME: Baltimore City CC ()

| NO | PLAYER | TOT-FG | | | | | 3-PT | | REBOUNDS | | | | | | | S | MIN | |
|---------------|-------------------|--------|----|-----|----|-----|------|-----|----------|-----|-----|----|----|---|----|---|-----|-----|
| | | P | FG | FGA | FG | FGA | FT | FTA | OFF | DEF | TOT | PF | TP | A | TO | | | BK |
| 5 | Wright, Warren | * | 2 | 7 | 1 | 3 | 0 | 0 | 1 | 3 | 4 | 3 | 5 | 0 | 2 | 0 | 0 | 18- |
| 14 | Farr, Sean | * | 9 | 11 | 0 | 0 | 2 | 4 | 3 | 2 | 5 | 3 | 20 | 0 | 1 | 0 | 2 | 30+ |
| 15 | West, Theodore | * | 7 | 15 | 0 | 0 | 1 | 3 | 0 | 3 | 3 | 2 | 15 | 0 | 0 | 0 | 0 | 32- |
| 22 | Smith, Carlos | * | 8 | 10 | 1 | 2 | 4 | 10 | 3 | 5 | 8 | 2 | 21 | 1 | 3 | 1 | 1 | 35- |
| 40 | Williams, Zafir | * | 6 | 11 | 0 | 2 | 2 | 3 | 0 | 2 | 2 | 0 | 14 | 5 | 3 | 0 | 2 | 32+ |
| 4 | Washington, Tyler | | 0 | 0 | 0 | 0 | 0 | 0 | 0 | 0 | 0 | 0 | 0 | 0 | 0 | 0 | 0 | 5- |
| 10 | Goines, Karrell | | 4 | 7 | 0 | 0 | 4 | 5 | 1 | 2 | 3 | 0 | 12 | 1 | 1 | 0 | 0 | 25+ |
| 23 | Stuckey, Donte | | 1 | 3 | 0 | 1 | 0 | 0 | 0 | 0 | 0 | 3 | 2 | 0 | 1 | 0 | 2 | 15+ |
| 24 | Diboko, Christian | | 0 | 1 | 0 | 0 | 0 | 0 | 0 | 2 | 2 | 0 | 0 | 0 | 0 | 0 | 0 | 7+ |
| TEAM REBOUNDS | | | | | | | | | 2 | 1 | 3 | | | | | | | |
| Team Totals | | | 37 | 65 | 2 | 8 | 13 | 25 | 10 | 20 | 30 | 13 | 89 | 7 | 11 | 1 | 7 | 200 |

Total FG% - 1st: 15/32 0.469 2nd: 22/33 0.667 Game: 0.569 Deadball
 3-PT FG% - 1st: 1/5 0.200 2nd: 1/3 0.333 Game: 0.250 Rebounds
 Total FT% - 1st: 5/9 0.556 2nd: 8/16 0.500 Game: 0.520 (7,0)

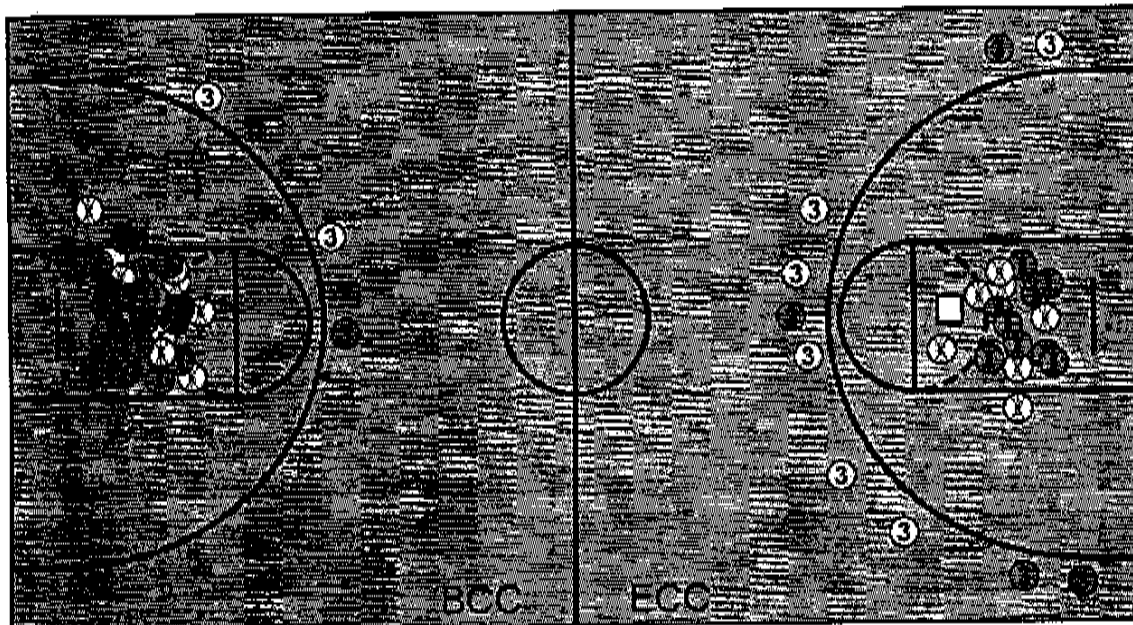
Technical Fouls: ECC (0)
 : BCC (1) 1st 16:49 14 Sean Farr

OFFICIALS :
 ATTENDANCE : 0

| ENHANCED SCORING | FstBrk | OffTov | Faint | 2ndCh | Bench |
|------------------------|--------|--------|-------|-------|-------|
| Erie Community College | 0 | 8 | 44 | 21 | 4 |
| Baltimore City CC | 0 | 15 | 68 | 12 | 14 |

| SCORE BY PERIODS | 1st | 2nd | TOTAL |
|------------------------|-----|-----|-------|
| Erie Community College | 47 | 37 | 84 |
| Baltimore City CC | 36 | 53 | 89 |

DakStats by Daktronics Inc. Brookings, SD



□ Block X Miss ● Made

| ECC | FG | FGA | PCT | 3P | 3PA | PCT | FT | FTA | PCT | ORB | DRB | TRB | PF | A | TO | BK | STPTS | |
|-----|----|-----|------|----|-----|------|----|-----|------|-----|-----|-----|----|---|----|----|-------|----|
| 2nd | 13 | 28 | 46.4 | 4 | 10 | 40.0 | 7 | 8 | 87.5 | 4 | 7 | 11 | 12 | 2 | 11 | 1 | 4 | 37 |
| | 13 | 28 | 46.4 | 4 | 10 | 40.0 | 7 | 8 | 87.5 | 4 | 7 | 11 | 12 | 2 | 11 | 1 | 4 | 37 |
| BCC | FG | FGA | PCT | 3P | 3PA | PCT | FT | FTA | PCT | ORB | DRB | TRB | PF | A | TO | BK | STPTS | |
| 2nd | 22 | 33 | 66.7 | 1 | 3 | 33.3 | 8 | 16 | 50.0 | 7 | 12 | 19 | 7 | 3 | 7 | 1 | 6 | 53 |
| | 22 | 33 | 66.7 | 1 | 3 | 33.3 | 8 | 16 | 50.0 | 7 | 12 | 19 | 7 | 3 | 7 | 1 | 6 | 53 |

DakStats by Daktronics Inc. Brookings, SD