

Box Score

file:///F:/Game%20%2320%20Box%20Score%20FINAL.htm

*Game 20 final*Date: 3/23/2012
Time: 3:00 pmArena:
City, State:

VISITOR: Louisburg College ()

NO	PLAYER	TOT-FG		3-PT		REBOUNDS						A	TO	BK	S	MIN		
		P	FG	FGA	FG	FGA	FT	FTA	OFF	DEF	TOT						PF	TP
11	Johnson, Antar	*	4	13	1	5	0	0	1	2	3	2	9	2	2	0	0	15-
24	Williams, Kevin	*	6	9	0	0	2	4	1	5	6	2	14	6	4	0	1	10
33	Hicks, Josh	*	7	11	3	4	2	2	0	4	4	1	19	2	1	1	2	22-
41	Alexander, LaShawn	*	4	12	0	0	2	4	4	8	12	2	10	1	0	1	0	9-
43	Goodwin, Joe	*	2	9	0	0	0	0	0	2	2	1	4	0	1	0	1	9-
3	Robinson, Antonio		2	3	0	0	2	2	2	1	3	3	6	0	1	1	0	24-
10	Langston, Daquan		1	1	0	0	1	1	0	1	1	0	3	2	1	0	0	7+
23	Chavis, Rashod		1	6	0	2	0	0	0	4	4	1	2	2	2	0	1	18+
42	Roberts, Tyquan		2	8	0	2	3	5	2	4	6	3	7	0	1	0	0	30-
50	Christian, Terance		3	5	0	0	2	2	1	2	3	2	8	2	1	0	0	24+
TEAM REBOUNDS									0	0	0				2			
Team Totals			32	77	4	13	14	20	11	33	44	17	82	17	16	3	5	167

Total FG% - 1st: 16/44 0.364 2nd and OTs: 16/33 0.485 Game: 0.416 Deadball
 3-PT FG% - 1st: 2/8 0.250 2nd and OTs: 2/5 0.400 Game: 0.308 Rebounds
 Total FT% - 1st: 5/6 0.833 2nd and OTs: 9/14 0.643 Game: 0.700 (8,2)

HOME: South Moutain CC ()

NO	PLAYER	TOT-FG		3-PT		REBOUNDS						A	TO	BK	S	MIN		
		P	FG	FGA	FG	FGA	FT	FTA	OFF	DEF	TOT						PF	TP
3	Haymond, Chaz	*	2	8	0	1	0	0	3	0	3	2	4	0	0	0	0	10
11	Cole, Chuck	*	3	11	2	5	1	2	1	3	4	0	9	1	2	0	1	18+
13	Andrade, Ernesto	*	5	12	0	0	1	2	6	4	10	1	11	0	0	1	0	28+
23	Craig, Michael	*	7	19	1	6	5	6	5	10	15	3	20	7	6	1	1	15-
24	Foster, Alyx	*	6	13	0	1	3	4	2	4	6	1	15	2	3	2	1	24-
1	Stafford, DaLan		0	6	0	1	1	2	0	0	0	1	1	0	3	0	1	20+
2	Williams, LC		0	0	0	0	0	0	0	0	0	1	0	0	1	0	0	3-
4	Gonzalez, Sergio		0	0	0	0	0	0	0	0	0	0	0	0	0	0	0	0
5	Williams, Jason		0	0	0	0	0	0	0	0	0	0	0	0	0	0	0	1-
10	Smith, Tarik		2	4	0	0	1	2	0	3	3	0	5	0	0	0	1	14-
21	Renzi, John		3	4	0	0	0	1	1	1	2	0	6	0	2	0	1	2
32	Riley, Terry		1	1	0	0	0	0	1	5	6	5	2	0	0	0	0	26-
TEAM REBOUNDS									0	1	1				0			
Team Totals			29	78	3	14	12	19	19	31	50	14	73	10	17	4	6	160

Total FG% - 1st: 15/38 0.395 2nd and OTs: 14/40 0.350 Game: 0.372 Deadball
 3-PT FG% - 1st: 1/4 0.250 2nd and OTs: 2/10 0.200 Game: 0.214 Rebounds
 Total FT% - 1st: 5/9 0.556 2nd and OTs: 7/10 0.700 Game: 0.632 (2,1)

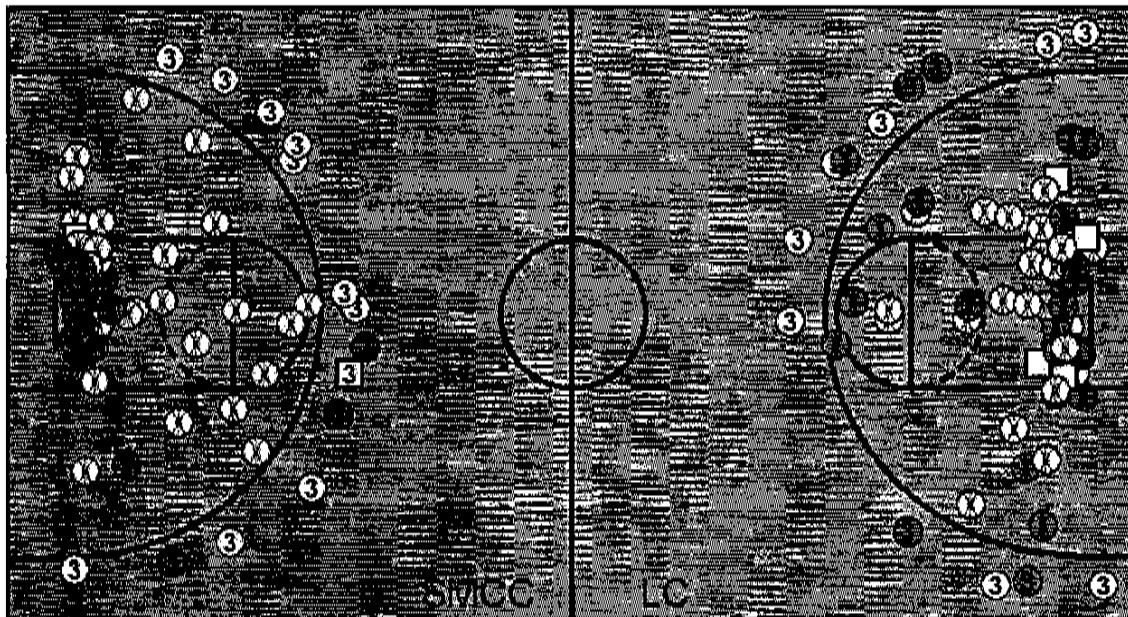
Technical Fouls: LC (0)
 ; SMCC (0)

OFFICIALS :
 ATTENDANCE : 0

ENHANCED SCORING	FstBrk	OffTov	Paint	2ndCh	Bench
Louisburg College	0	14	34	10	26
South Moutain CC	0	7	50	20	14

SCORE BY PERIODS	1st	2nd	OT1	TOTAL
Louisburg College	39	43		82
South Moutain CC	33	40		73

DakStats by Daktronics Inc. Brookings, SD



□ Block ⊗ Miss ● Made

LC	FG	FGA	PCT	3P	3PA	PCT	FT	FTA	PCT	OR	DR	B	TR	B	TR	PF	A	TO	BK	ST	P	T	
1st	16	44	36.4	2	8	25.0	5	6	83.3	7	17	24	8	7	8	1	3	39					
2nd	14	30	46.7	2	5	40.0	9	14	64.3	4	14	18	9	10	8	2	2	39					
OT1	2	3	66.7	0	0	0.0	0	0	0.0	0	2	2	0	0	0	0	0	4					
	32	77	41.6	4	13	30.8	14	20	70.0	11	33	44	17	17	16	3	5	82					

SMCC	FG	FGA	PCT	3P	3PA	PCT	FT	FTA	PCT	OR	DR	B	TR	B	TR	PF	A	TO	BK	ST	P	T	
1st	15	38	39.5	1	4	25.0	5	9	55.6	8	18	26	5	6	9	2	3	36					
2nd	12	36	33.3	2	9	22.2	7	10	70.0	11	12	23	9	3	8	2	3	33					
OT1	2	4	50.0	0	1	0.0	0	0	0.0	0	1	1	0	1	0	0	0	4					
	29	78	37.2	3	14	21.4	12	19	63.2	19	31	50	14	10	17	4	6	73					

SCORE BY PERIODS	1st	2nd	OT1	TOTAL
Louisburg College	39	39	4	82
South Moutain CC	33	36	4	73

DakStats by Daktronics Inc. Brookings, SD

Note - due to power surge overtime period was artificially created; all stats in "overtime period" belong to and should be added to 2nd half