



**INDIANA STATE  
UNIVERSITY  
ATHLETICS  
MEDIA RELATIONS**

Student Services Bldg.  
Room A-15  
Terre Haute, IN 47809  
Office (812) 237-4160  
Fax (812) 237-4157  
website: [web.indstate.edu/athletic](http://web.indstate.edu/athletic)

**BASKETBALL GAME NOTES: FEBRUARY 9, 2002**

**2001-02 SYCAMORES SCHEDULE**

|       |                     |               |
|-------|---------------------|---------------|
| N 18  | @Illinois-Chicago   | L, 54-70      |
| N 21  | Valparaiso          | L, 54-71      |
| N 25  | @Butler             | L, 49-69      |
| N 28  | @Eastern Illinois   | L, 50-52      |
| D 1   | IUPUI               | W, 66-56      |
| D 3   | Murray State        | W, 74-66      |
| D 9   | *@Drake             | L, 71-85      |
| D 16  | *@Creighton         | L, 46-70      |
| D 19  | @Wyoming            | L, 58-72      |
| D 22  | Ball State          | L, 54-68      |
| D 29  | Bowling Green       | L, 55-65      |
| J 5   | *Evansville         | W, 45-40      |
| J 10  | *Northern Iowa      | L, 70-71      |
| J 12  | *@Illinois State    | L, 56-68      |
| J 16  | *Wichita State      | L, 63-64      |
| J 19  | *@Southern Illinois | L, 73-91      |
| J 23  | *@Northern Iowa     | W, 71-65      |
| J 27  | *SW Missouri State  | L, 53-59      |
| J 31  | *@Bradley           | L, 57-60      |
| F 3   | *@Wichita State     | L, 84-87 (ot) |
| F 6   | *Creighton          | L, 63-64      |
| F 9   | *Illinois State     | 4:05 p.m.     |
| F 13  | *Bradley            | 7:05 p.m.     |
| F 16  | *@Evansville        | 8:05 p.m.     |
| F 19  | *Drake              | 7:05 p.m.     |
| F 23  | *Southern Illinois  | 6:05 p.m.     |
| F 25  | *@SW Missouri State | 9:05 p.m.     |
| M 1-4 | @MVC Tournament     | TBA           |

\*MVC contest

**SYCAMORE ATHLETICS MEDIA RELATIONS**

**Kent Johnson**..... Director  
Office Phone ..... (812) 237-4161  
Home Phone ..... (812) 298-0176  
email ..... [athkj@scifac.indstate.edu](mailto:athkj@scifac.indstate.edu)  
ISU Sports Info. .... (812) 237-4160  
**Ace Hunt** ..... Asst. Director  
**Danny Kambel** ..... Asst. Director  
**Karen Wachendorf** ..... Graduate Asst.  
**Tom Sewell**..... Website Coord./Graphics  
**Hulman Press Row** ..... (812) 237-3654

**SYCAMORES ON THE AIR**

**Radio:** ..... Sycamore Radio Network  
**Local Outlets:** ..... WSDM-FM 97.7  
Brian Fritz, play-by-play  
Michael Menser, color analysis  
**TV:** ..... none

**INDIANA STATE (4-17/2-10) vs. ILLINOIS STATE (11-12/7-5)  
SATURDAY, FEBRUARY 9 • 4:05 P.M. EST  
HULMAN CENTER (CAP. 10,220) • TERRE HAUTE, IN**

**SYCAMORES HOST REDBIRDS** – Indiana State continues a three-game, Missouri Valley Conference homestand when it hosts Illinois State, Saturday, February 9. Tip-off at Hulman Center (cap. 10,220) is set for 4:05 p.m. EST.

**THE RECORDS** – Indiana State enters Saturday afternoon's contest with records of 4-17/2-10 MVC. Most recently, the Sycamores dropped a 64-63 contest this past Wednesday night to league-leading Creighton. In fact, each of the Sycamores last three games, all resulting in Indiana State losses, have been decided by three points or less. Prior to the Creighton contest, the Sycamores dropped a pair of road decisions, 84-87 (ot) at Wichita State and 57-60 at Bradley. Indiana State is 3-7 at home, 1-10 away from Hulman Center. Playing a schedule rated among the twenty-toughest in the country, Indiana State went 2-7 in non-conference action.

Illinois State, 11-12/7-5 MVC, is coming off a 60-51 home win over Bradley. That game resulted in the Redbirds sweeping the in-state rivalry with the Braves. The Redbirds have won five of their last six outings, with the lone blemish being a 63-68 loss at SMS on February 2. Illinois State stands 9-2 at home and 1-8 away from home, while in Valley action, they sport records of 6-1 at home, 1-4 away from Redbird Arena.

**THE COACH** – Sycamore head coach Royce Waltman (Slippery Rock '64) is entering his fifth season at the helm of the Indiana State basketball program. Waltman's record as head coach at Indiana State is **79-62 (.560)** through four-plus seasons, while his 15-year career mark stands at **268-148 (.644)**, including previous head coaching stints at Indianapolis (1993-97) and DePauw (1988-92).

**THE SERIES** – Indiana State trails, 38-46, in the overall series. Earlier this season, Illinois State took a 68-56 victory in Normal, IL. The Sycamores lead the series, 27-16, in games contested in Terre Haute. Last season, the Sycamores took a 74068 victory at Hulman Center on Feb. 10, 2001.

**ON THE AIR** – Every Sycamore regular and postseason game may be heard live on WSDM-FM 97.7 and the Sycamore Radio Network with Brian Fritz (play-by-play) and former Sycamore guard Michael Menser (color) calling the action.

**NEXT UP** – Indiana State hosts Bradley, Wednesday, February 13, at Hulman Center. Tipoff is set for 7:05 p.m. EST.

**Probable Sycamore Starters**

|    | Pos.           | Ht. | Wt. | Cl-Exp. | GP-GS | Ppg.  | Rpg. | Other |   |
|----|----------------|-----|-----|---------|-------|-------|------|-------|---|
| 1  | Marcus Howard  | G   | 6-3 | 185     | So-1L | 21-19 | 8.9  | 2.4   | 17 points off the bench at Wichita St.  |
| 10 | Lamar Grimes   | G   | 6-0 | 175     | Fr-HS | 21-14 | 8.2  | 1.8   | seven pts., three assists vs. Creighton |
| 14 | Kelyn Block    | G   | 6-2 | 200     | Sr-3L | 14-13 | 12.6 | 4.6   | career-high 25 points at Wichita St.    |
| 40 | Matt Broermann | F   | 6-5 | 200     | Jr-2L | 21-15 | 5.8  | 2.8   | hit 4-of-5 three pointers vs. Creighton |
| 3  | Djibril Kante  | C   | 6-8 | 245     | Sr-3L | 21-21 | 9.5  | 8.3   | seven pts., nine reb. vs. Creighton     |



## STATS COMPARISON



### Indiana State

|      | Points/Gm         | Illinois State |
|------|-------------------|----------------|
| 60.3 | Points/Gm         | 65.7           |
| 67.3 | Opp. Points/Gm    | 67.4           |
| 41.1 | FG%               | 43.3           |
| 43.4 | FG% Defense       | 47.0           |
| 34.4 | 3FG%              | 35.8           |
| 35.1 | 3FG% Defense      | 33.9           |
| 62.2 | FT%               | 76.2           |
| 67.0 | Opp. FT%          | 68.8           |
| 32.7 | Reb/Gm            | 31.5           |
| 37.4 | Opp. Reb/Gm       | 33.0           |
| 11.5 | Assists/Gm        | 14.2           |
| 14.4 | Turnovers/Gm      | 14.7           |
| 12.5 | Opp. Turnovers/Gm | 15.6           |

### Illinois State

**SYCAMORES HOME AND AWAY** – Thus far in 2001-02, Indiana State stands 3-7 at home and 1-10 on the road. In four-plus seasons under head coach Royce Waltman, Indiana State has recorded a 48-15 (.762) mark at Hulman Center, at one point compiling a 22-game home winning streak. Over the past four seasons, the Sycamores have posted home records of 12-2 (2000-01), 12-1 (1999-2000), 10-3 (1998-99) and 11-2 (1997-98). Indiana State is 17-4 (.810) in non-conference home games and 30-11 (.732) in Valley home games under Waltman. On the road, ISU has recorded a 22-40 (.355) ledger and stand 15-27 (.357) in Valley road games under Waltman. The Sycamores recorded a 5-8 road mark in 2000-01, were 6-6 in 1999-2000 and were 5-8 in both 1998-99 and 1997-98.

**NONCONFERENCE SLATE WAS PERILOUS**– Playing a nonconference schedule ranked among the fifteen-toughest in the country (Sagarin ranking), Indiana State posted its worst non-league record since the 1993-94 campaign. No fewer than five of Indiana State's seven non-league opponents were tabbed to win either their respective league or division titles in 2001-02. Ball State (MAC-West), Butler (Horizon League), Murray State (Ohio Valley), Valparaiso (Mid-Continent) and Wyoming (Mountain West) are predicted top their standings.

**SYCAMORE DEFENSE STINGY** – Indiana State ranks third in the Missouri Valley Conference in points allowed, giving up just 67.3 ppg. The Sycamores stand fourth in field goal percentage defense, holding opponents to 43.4 FG%.

**KANTE EARNS PLAYER OF WEEK HONORS** – Senior center Djibril Kante received Valley Player of the Week honors after recording back-to-back double-double performances the week of Jan 21, registering career scoring and rebound watermarks in the process. He opened the week by recording a career-high 14 rebounds along with 10 points in the Sycamores' 71-65 victory at Northern Iowa. He then netted a career-high 20 points to go with 10 rebounds against SMS. For the week, the Bloomington, IN, native shot 60.0 pct. from the field while averaging 12.5 points and 15.0 rebounds.

## SYCAMORE LISTS OF NOTE

### ISU CAREER STEALS

|                                  |           |
|----------------------------------|-----------|
| 1. Larry Bird, 1976-79           | 240       |
| Nate Green, 1996-00              | 240       |
| 3. Michael Menser, 1997-2001     | 188       |
| 4. Matt Renn, 1997-2001          | 165       |
| 5. Rick Fields, 1981-85          | 145       |
| 6. Carl Nicks, 1976-80           | 128       |
| 7. Nick Hargorve, 1993-97        | 118       |
| 8. Jim Cruse, 1993-97            | 102       |
| 9. Jim Smith, 1974-78            | 100       |
| <i>Kelyn Block, 1998-present</i> | <i>95</i> |

### ISU CAREER BLOCKED SHOTS

|                                       |            |
|---------------------------------------|------------|
| 1. DeCarsta Webster, 1975-78          | 168        |
| <i>2. Djibril Kante, 1998-present</i> | <i>122</i> |
| 3. Nate Green, 1996-00                | 109        |
| 4. Larry Bird, 1976-79                | 83         |
| 5. Alex Gilbert, 1978-80              | 75         |

### ISU CAREER SCORING

|                                      |              |
|--------------------------------------|--------------|
| 15. Sam Richardson, 1951-55          | 1,211        |
| 16. Bob Barker, 1968-71              | 1,199        |
| <i>17. Kelyn Block, 1998-present</i> | <i>1,195</i> |

**BLOCK RETURNS IN FINE FORM** – In his first action since missing seven games due to knee surgery, senior guard Kelyn Block's was nothing short of prolific. First, the Kansas City, KS, native reached double-digit scoring in a reserve role at Bradley, tallying 11 points to go with three rebounds. Then, at Wichita State, he marked his return to the starting lineup by scoring a career-high 25 points, grabbing six rebounds and logging 35 minutes during the Sycamores' overtime affair. For the week, Block shot 52.4 percent from the floor, while averaging 18.0 points, 4.5 rebounds and 31.0 minutes over two contests.

**MUSICAL LINEUPS** – In part due to injuries, as well as trying to roll a winning combination, the Sycamores have used 12 different starting lineups this season. In contrast, a year ago the Sycamores used nine different lineups for the season.

**SHARPSHOOTING AGAINST PANTHERS** – Indiana State's 51.0 field goal percentage at Northern Iowa was a season-high water mark. The Sycamores' second-best shooting performance came during their initial meeting with the Panthers, when they hit 49.1 percent from the floor.

**BUT A TURNABOUT AGAINST THE BEARS** – Unfortunately, the Sycamore followed that season-best UNI outing with a 33.3 field goal percentage against SMS, tying their worst shooting outing of the season.

**HOWARD SHUTS 'EM DOWN** – Sophomore guard Marcus Howard has developed into one of the toughest defenders in the Missouri Valley Conference. The 6-5 Elgin, IL, product, who leads the Sycamores in steals, with 19, is generally given the assignment of guarding the oppositions top outside sharpshooter. Howard held UNI's Robbie Sieverding - the Valley's leading scorer - without a field goal during the Sycamores' 71-65 victory in Cedar Falls, IA.

**INDIANA STATE MEDIA POLICIES COVERING PRACTICE**

Indiana State will generally practice at the following times: M-6-8:30 a.m., Tu 3:30-5:30 p.m, Th 5-7:00 p.m., Fri 3:30-5:30 p.m. Please call the Athletics Media Relations Office (812) 237-4161 to confirm daily practice times. Practices are generally open to the media and public, unless otherwise noted.

**PLAYER INTERVIEWS**

All requests for player interviews must be made through the ISU Athletics Media Relations office. Players have been instructed to conduct no interviews unless they have been set up in this manner. Interviews generally will be conducted before or after practice at Hulman Center. Players generally are available throughout the week with the exception of game days. Requests for telephone interviews will be handled by players returning phone calls to the media. **No home telephone numbers will be given out.**

**INTERVIEWS WITH COACH WALTMAN**

Interviews with Head Coach Royce Waltman may be arranged through the ISU Athletics Media Relations Office by calling (812) 237-4161. It is best to arrange phone interviews during the morning. If you are unable to speak with Coach Waltman during the mornings, he is available to the media prior to or directly after the conclusion of practice at Hulman Center.

**MVC COACHES TELECONFERENCE**

The Missouri Valley Conference weekly basketball head coaches teleconference will be held every Tuesday. The call will begin at 11:00 a.m. EST. Indiana State head coach Royce Waltman will occupy the 11:30 a.m. time slot. **The number to call to access the teleconference is: (913) 981-5509.**

| <b>Coach</b>                      | <b>Time</b>  |
|-----------------------------------|--------------|
| Jim Molinari, Bradley             | 11:05        |
| Dana Altman, Creighton            | 11:10        |
| Kurt Kanaskie, Drake              | 11:15        |
| Jim Crews, Evansville             | 11:20        |
| Tom Richardson, Illinois St.      | 11:25        |
| <b>Royce Waltman, Indiana St.</b> | <b>11:30</b> |
| Greg McDermott, Northern Iowa     | 11:35        |
| Bruce Weber, Southern Illinois    | 11:40        |
| Barry Hinson, SMS                 | 11:45        |
| Mark Turgeon, Wichita St.         | 11:50        |

**SYCAMORES ON THE WEB**

For up-to-date information regarding Indiana State basketball, including game notes, recaps and statistics, you can access the Indiana State Athletics Web site at: <http://web.indstate.edu/athletic/mensbb>

**KANTE HOT FROM THE LINE** – A 56.9 percent free throw shooter for the season, senior center Djibril Kante has made 16 of his last 18 attempts. He had the hot hand at Wichita State, where the Bloomington, IN, native canned a career-best 13-of-14 free throw attempts. He followed by hitting three-of-four against Creighton.

**SYCAMORES STRUGGLING IN CLOSE ENCOUNTERS** – One possibility for the Sycamores’ downturn this season may be found in their record in close games. Specifically, those games decided by three points or less. For the year, Indiana State stands 0-6 in such encounters. And those outcomes are becoming more frequent, as each of the Sycamores’ last three games have been decided by three points or less, as have five of their past nine contests.

**BROERMANN FROM THREE** – Junior guard Matt Broermann nailed four-of-five three point efforts against Creighton, including one from the right corner which gave the Sycamores the lead with just :14 seconds remaining in the game. For the year, he has hit 34 of his 89 three point attempts.

**WHERE'S THE LINE** – At home from beyond the three-point arc, Matt Broermann has yet to become truly familiar at the free throw line, simply because he doesn't go there often. Over his three-year career, the Hamilton, OH, native has attempted just 27 free throw attempts (an average of just one attempt per every three games).

**HOWARD LIGHTS UP** – Normally thought of as a defensive specialist, sophomore guard Marcus Howard showed his offensive skills at Wichita State. Against the Shockers, the Elgin, IL, native tallied 17 points (the second-highest in his career), marking his 11th double-figure scoring outing.

**BRO COMES UP BIG AGAINST SHOCKERS**– Guard Matt Broermann enjoyed a career night against Wichita State. The 6-5 junior hit a school-record tying eight three-pointers en route to a career-high 24 points, joining three previous Sycamores who have made eight three-pointers in a single game. At one point, Broermann nailed second consecutive treys to finish the night 8 of 11 from three-point range. Against Southern Illinois, Broermann enjoyed a career-high rebound outing, grabbing seven rebounds.

**2001-02 INDIANA STATE NUMERICAL ROSTER**

| <b>No</b> | <b>Name</b>    | <b>Pos</b> | <b>Ht</b> | <b>Wt</b> | <b>Cl/Exp</b> | <b>Hometown</b>    |
|-----------|----------------|------------|-----------|-----------|---------------|--------------------|
| 1         | Marcus Howard  | G          | 6-3       | 185       | So-1L         | Elgin, IL          |
| 3         | Djibril Kante  | F          | 6-8       | 245       | Sr-3L         | Bloomington, IN    |
| 10        | Lamar Grimes   | G          | 6-0       | 175       | Fr-HS         | Chicago, IL        |
| 11        | Matt Berry     | G          | 6-5       | 205       | So-1L         | Tulsa, OK          |
| 14        | Kelyn Block    | G          | 6-3       | 200       | Sr-3L         | Kansas City, KS    |
| 31        | Terence Avery  | C          | 6-9       | 240       | Sr-2L         | West Frankfort, IL |
| 34        | Jake Sams      | F          | 6-8       | 205       | Fr-HS         | Mount Zion, IL     |
| 40        | Matt Broermann | G          | 6-5       | 200       | Jr-2L         | Hamilton, OH       |
| 44        | Jerod Adler    | F          | 6-9       | 230       | Fr-HS         | Monroe, IN         |
| 50        | Michael Kernan | C          | 6-10      | 200       | So-1L         | St. Louis, MO      |

**COACHING STAFF**

**Head Coach:** Royce Waltman (Slippery Rock ‘64)  
**Associate Head Coach:** Dick Bender (Western Maryland ‘86)  
**Assistant Coaches:** Rick Ray (Grand View College ‘94), Kareem Richardson (Evansville, ‘97)



**SYCAMORES' GET DEFENSIVE AGAINST ACES –**

On January 5, Indiana State held visiting Evansville to a season-low 28.1 percent shooting from the field. That 28.1 field goal percentage represents the first time the Sycamores have held an opponent to below 30 percent from the field since limiting Loyola-Chicago to just 29.3% on December 12, 1998 in Chicago.

**KANTE BLOCKS AWAY –** Now residing in second place on the Indiana State career blocked shots list, senior center Djibril Kante has 122 career blocks. The Bloomington, IN, native has recorded 25 blocks this season, an average of 1.2 blocks per outing.

**ADLER GETS INTO THE ACT –** Freshman post Jerod Adler earned the first starting appearances of his career at Bradley and at Wichita State. During those two outings, the 6-8, Monroe, IN, native logged an average of 19.5 minutes.

**BOARDS BY COMMITTEE –** No single Indiana State player is posting glittering rebound numbers. Rather, four players, Terence Avery, Djibril Kante, Kelyn Block and Matt Berry are each contributing the lion's share on the boards. Kante is averaging a team-high 8.3 rpg., Avery is contributing 5.4 rpg., Block is averaging 4.6 rpg. while Berry is averaging 3.4 rebounds.

**AVERY REMAINS STRONG ON OFFENSIVE GLASS**

– Senior center Terence Avery's continues to show remarkable production on the offensive boards, nearly matching his defensive rebound total. For the season, Avery, who is averaging 5.4 rpg., has 47 offensive rebounds to go with 56 defensive rebounds.

**... AND IS SOLID ON BOTH ENDS OF FLOOR –**

Despite being hampered the past six contests by a broken hand, center Terence Avery has displayed a dramatic increase in offensive production during the 2001-02 season. In averaging 9.1 points to go with 5.4 rebounds, Avery has posted eight double-figure scoring performances, including a career-high 29 points at Eastern Illinois, 22 points at Illinois State and 14 points at Wyoming. Meanwhile, the West Frankfurt, IL, native grabbed a career-best 12 rebounds at Eastern Illinois, recorded 11 rebounds vs. Bowling Green and nine rebounds at Butler.

**BLOCK AMONG ISU SCORING LEADERS –**

Senior guard Kelyn Block continues his climb up the Indiana State career scoring chart. With 166 points thus far in 2001-02, the Kansas City, KS native has accumulated 1,195 career points. That ranks 17th on the ISU all-time scoring chart, four points shy of 16th place-Bob Barker (1968-71, 1,199 pts.), 16 behind Sam Richardson (1951-55, 1,211 pts.) and 47 points shy of 14th place-Greg Thomas (1989-93, 1,242 pts.).

**FRESHMAN PRODUCTION –**

Three Sycamore true freshmen have seen activity in 2001-02. Freshmen point guard Lamar Grimes, who has drawn 14 starting assignments this season, is averaging 8.2 points, 1.8 rebounds, 2.6 assists and 23.5 minutes. Grimes has twice recorded a career-high 21 points, at Bradley and at Southern Illinois.

***SYCAMORES' RECORD WHEN ...***

|  |      |
|--|------|
| Leading at the Half .....                      | 4-4  |
| Trailing at the Half .....                     | 0-9  |
| Tied at the Half .....                         | 0-4  |
|  |      |
| Shooting over 50% from the field .....         | 1-0  |
| Shooting 45-49.9% from the field .....         | 1-4  |
| Shooting 40-44.9% from the field .....         | 1-5  |
| Shooting under 40% from the field .....        | 1-8  |
|  |      |
| Opponents shoot over 50% from the field .....  | 0-1  |
| Opponents shoot 45-49.9% from the field .....  | 0-9  |
| Opponents shoot 40-44.9% from the field .....  | 1-5  |
| Opponents shoot under 40% from the field ..... | 3-2  |
|  |      |
| Outrebounding an opponent .....                | 2-5  |
| Outrebounded by opponent .....                 | 1-11 |
| Rebounds equal .....                           | 0-1  |
|  |      |
| Committing fewer turnovers than opponent ..... | 3-3  |
| Committing more turnovers than opponent .....  | 1-14 |
| Turnovers equal .....                          | 0-0  |
|  |      |
| Scoring 80 or more points .....                | 0-1  |
| Scoring 70-79 points .....                     | 2-3  |
| Scoring 60-69 points .....                     | 1-2  |
| Scoring fewer than 60 points .....             | 1-11 |
|  |      |
| Game decided by less than 5 points .....       | 0-6  |
| Game decided by 5-10 points .....              | 4-2  |
| Game decided by 11-20 points .....             | 0-7  |
| Game decided by 20+ points .....               | 0-2  |

Forward Jake Sams is averaging 3.7 points (hitting a season-best 13 points at Butler) and 1.5 boards while seeing 14.4 minutes per contest, including seven starting appearances. Center Jerod Adler is averaging 0.9 points and 0.8 rebounds over 7.3 minutes per game while making two starts in 16 appearances. Forward Darron Evans is being redshirted this season.

**STRONG SOPHOMORES –**

The Sycamores' sophomore guard tandem of Matt Berry (Tulsa, OK-Washington) and Marcus Howard (Elgin, IL-High) has proven productive. Howard, who's career spans 55 contests, is averaging 8.9 points and 2.4 rebounds per contest. The Sycamores' season assist leader with 55, and steal leader with 24, he has reached double-digit scoring totals 11 times, including a career-best 18 points coming against Northern Iowa and 17 points at Wichita St. Berry, who has seen duty in 54 games during his career, is averaging 5.4 points and 3.4 boards this season, including a career-best 15 points at Butler and 14 points against Murray State. Berry enjoyed a career-topping 13 rebounds against IUPUI.

**SYCAMORES' RECORD BY STARTING LINEUP**

g,g,g,f,c

(1-1)

Berry, Block, Howard, Kante, Avery

(1-1)

Broermann, Grimes, Howard, Kante, Avery

(1-3)

Broermann, Grimes, Howard, Sams, Kante

(1-2)

Block, Broermann, Howard, Kante, Avery

(0-1)

Block, Broermann, Grimes, Kante, Adler

(0-1)

Broermann, Grimes, Howard, Adler, Kante

(0-1)

Broermann, Grimes, Howard, Kante, Kernan

(0-2)

Block, Grimes, Howard, Sams, Kante

(0-1)

Block, Broermann, Howard, Sams, Kante

(0-1)

Block, Broermann, Grimes, Kante, Avery

(0-1)

Block, Berry, Howard, Broermann, Kante

(0-2)

Block, Grimes, Howard, Kante, Avery

**2001-02 MVC STANDINGS (THRU 2/6)**

| School               | Conference |           |             | Overall  |           |             |
|----------------------|------------|-----------|-------------|----------|-----------|-------------|
|                      | W          | L         | Pct.        | W        | L         | Pct.        |
| Southern Illinois    | 10         | 2         | .833        | 20       | 4         | .833        |
| Creighton            | 10         | 2         | .833        | 15       | 6         | .714        |
| Northern Iowa        | 7          | 5         | .583        | 12       | 9         | .571        |
| SMS                  | 7          | 5         | .583        | 12       | 12        | .500        |
| Illinois State       | 7          | 5         | .583        | 11       | 12        | .478        |
| Wichita State        | 6          | 6         | .500        | 12       | 11        | .522        |
| Drake                | 5          | 7         | .417        | 10       | 12        | .455        |
| Bradley              | 4          | 8         | .333        | 7        | 14        | .333        |
| <b>Indiana State</b> | <b>2</b>   | <b>10</b> | <b>.166</b> | <b>4</b> | <b>17</b> | <b>.190</b> |
| Evansville           | 2          | 10        | .166        | 5        | 16        | .238        |

**THIS WEEK IN THE VALLEY**

**Saturday, February 9**

**Illinois State at Indiana State**

Evansville at Bradley

Northern Iowa at Creighton

Drake at Southern Illinois

SMS at Wichita State

**Tuesday, February 12**

Wichita State at Northern Iowa

**Wednesday, February 13**

**Bradley at Indiana State**

Creighton at Drake

Illinois State at Evansville

Southern Illinois at SMS

**Saturday, February 16**

**Indiana State at Evansville**

Southern Illinois at Illinois State

Bradley at Drake

Northern Iowa at SMS

**INDIANA STATE'S LAST OUTING ...**

**CREIGHTON 64, INDIANA STATE 63**

Feb. 6, 2001 • Hulman Center • Terre Haute, IN

| CREIGHTON 64  | FG           | 3FG         | FT          | R         | F         | TP        | A         | TO        | BS       | ST       |
|---------------|--------------|-------------|-------------|-----------|-----------|-----------|-----------|-----------|----------|----------|
| Lindemann     | 2-9          | 0-1         | 0-0         | 2         | 2         | 4         | 3         | 0         | 0        | 2        |
| Korver        | 8-15         | 4-8         | 0-0         | 8         | 3         | 20        | 2         | 5         | 0        | 0        |
| Deren         | 3-4          | 0-0         | 1-4         | 9         | 3         | 7         | 2         | 1         | 1        | 1        |
| House         | 3-5          | 0-1         | 0-0         | 3         | 1         | 6         | 1         | 0         | 0        | 0        |
| McKinney      | 1-3          | 1-3         | 2-2         | 0         | 1         | 5         | 1         | 2         | 0        | 1        |
| Bowden        | 1-2          | 1-2         | 0-0         | 2         | 1         | 3         | 1         | 0         | 0        | 0        |
| Caro          | 1-1          | 0-0         | 0-0         | 2         | 3         | 2         | 2         | 2         | 0        | 0        |
| Dabbert       | 1-2          | 0-0         | 0-0         | 2         | 1         | 2         | 0         | 1         | 3        | 1        |
| Taylor        | 4-11         | 0-2         | 1-2         | 3         | 2         | 9         | 0         | 0         | 0        | 1        |
| Motz          | 0-1          | 0-0         | 0-0         | 0         | 0         | 0         | 0         | 1         | 0        | 0        |
| Grimes        | 2-4          | 0-0         | 2-3         | 1         | 2         | 6         | 0         | 0         | 1        | 1        |
| Team          |              |             |             | 3         |           |           |           |           |          |          |
| <b>Totals</b> | <b>26-57</b> | <b>6-17</b> | <b>6-11</b> | <b>35</b> | <b>19</b> | <b>64</b> | <b>12</b> | <b>12</b> | <b>5</b> | <b>7</b> |

| INDIANA ST. 63 | FG           | 3FG         | FT           | R         | F         | TP        | A         | TO        | BS       | ST       |
|----------------|--------------|-------------|--------------|-----------|-----------|-----------|-----------|-----------|----------|----------|
| Sams           | 2-4          | 0-0         | 0-0          | 0         | 1         | 4         | 1         | 0         | 0        | 0        |
| Kante          | 2-6          | 0-0         | 3-4          | 9         | 4         | 7         | 1         | 0         | 0        | 1        |
| Howard         | 1-5          | 0-1         | 2-2          | 2         | 2         | 4         | 4         | 2         | 0        | 2        |
| Grimes         | 3-4          | 0-0         | 1-2          | 0         | 5         | 7         | 3         | 2         | 0        | 1        |
| Block          | 2-6          | 2-5         | 0-1          | 4         | 0         | 12        | 1         | 1         | 0        | 0        |
| Berry          | 5-11         | 2-5         | 0-1          | 4         | 0         | 12        | 1         | 1         | 0        | 2        |
| Avery          | 3-6          | 0-0         | 0-1          | 4         | 0         | 6         | 0         | 1         | 0        | 0        |
| Broermann      | 4-5          | 4-5         | 0-1          | 3         | 1         | 12        | 3         | 0         | 0        | 1        |
| Adler          | 0-0          | 0-0         | 0-0          | 2         | 0         | 0         | 0         | 1         | 0        | 0        |
| Team           |              |             |              | 0         |           |           |           |           |          |          |
| <b>Totals</b>  | <b>22-47</b> | <b>6-13</b> | <b>13-21</b> | <b>26</b> | <b>13</b> | <b>63</b> | <b>15</b> | <b>11</b> | <b>0</b> | <b>7</b> |

**Halftime:** ISU 27, CU 27. **Turnovers:** CU 12, ISU 11. **FG%:** CU .456, ISU .468. **3FG%:** CU .353, ISU .462. **FT%:** CU .545, ISU .619. **Officials:** F. Spencer, T. Davis, A. Walton. A- 5,169.

**Notes:** McKinney hits pair of free throws with five second remaining to give Creighton the win. Indiana State trailed by nine, 52-61, with 3:34 remaining, but used a 10-1 run to take 63-62 lead. Broermann hits four-of-five three point attempts.

**THIS SEASON'S FIRST MEETING ...**

**ILLINOIS STATE 68, INDIANA STATE 56**

Jan. 12, 2002 • Redbird Arena • Normal, IL

| INDIANA ST. 56 | FG           | 3FG         | FT          | R         | F         | TP        | A         | TO        | BS       | ST       |
|----------------|--------------|-------------|-------------|-----------|-----------|-----------|-----------|-----------|----------|----------|
| Kante          | 2-2          | 0-0         | 0-1         | 7         | 4         | 4         | 2         | 3         | 1        | 1        |
| Broermann      | 0-4          | 0-4         | 0-0         | 5         | 0         | 0         | 2         | 0         | 0        | 2        |
| Avery          | 10-14        | 0-0         | 2-4         | 5         | 0         | 22        | 1         | 0         | 2        | 3        |
| Howard         | 4-9          | 1-4         | 2-3         | 2         | 1         | 11        | 4         | 5         | 0        | 0        |
| Grimes         | 2-6          | 0-1         | 1-2         | 1         | 1         | 5         | 4         | 2         | 1        | 0        |
| Berry          | 1-5          | 0-3         | 0-2         | 3         | 2         | 2         | 0         | 0         | 0        | 0        |
| Haywood        | 2-3          | 0-0         | 1-3         | 1         | 2         | 5         | 1         | 1         | 0        | 1        |
| Sams           | 3-6          | 1-2         | 0-1         | 2         | 4         | 7         | 0         | 0         | 1        | 0        |
| Adler          | 0-0          | 0-0         | 0-0         | 0         | 0         | 0         | 0         | 0         | 0        | 0        |
| Team           |              |             |             | 4         |           |           |           |           | 1        |          |
| <b>Totals</b>  | <b>24-49</b> | <b>2-14</b> | <b>6-16</b> | <b>30</b> | <b>14</b> | <b>56</b> | <b>14</b> | <b>12</b> | <b>5</b> | <b>7</b> |

| ILLINOIS ST. 68 | FG           | 3FG        | FT          | R         | F         | TP        | A         | TO        | BS       | ST       |
|-----------------|--------------|------------|-------------|-----------|-----------|-----------|-----------|-----------|----------|----------|
| Alexander       | 3-8          | 0-4        | 0-0         | 5         | 2         | 6         | 2         | 3         | 0        | 0        |
| Ford            | 5-13         | 0-0        | 1-1         | 2         | 2         | 11        | 1         | 0         | 0        | 0        |
| Bojang          | 5-10         | 0-0        | 5-6         | 11        | 4         | 15        | 2         | 4         | 0        | 0        |
| Rice            | 4-9          | 1-1        | 1-2         | 5         | 3         | 10        | 4         | 1         | 0        | 2        |
| Jeppson         | 4-10         | 1-3        | 2-2         | 0         | 1         | 11        | 1         | 0         | 0        | 1        |
| Williams        | 0-4          | 0-0        | 0-0         | 3         | 1         | 0         | 0         | 1         | 0        | 1        |
| Strandmark      | 4-6          | 0-0        | 0-0         | 7         | 1         | 8         | 0         | 0         | 2        | 1        |
| Greene          | 1-2          | 1-1        | 0-0         | 1         | 0         | 3         | 1         | 0         | 0        | 0        |
| Mazanowski      | 0-0          | 0-0        | 0-0         | 0         | 1         | 0         | 1         | 2         | 0        | 0        |
| Reid            | 2-3          | 0-0        | 0-0         | 2         | 2         | 4         | 0         | 0         | 0        | 0        |
| Gillan          | 0-0          | 0-0        | 0-0         | 0         | 0         | 0         | 0         | 0         | 0        | 0        |
| Team            |              |            |             | 5         |           |           |           |           |          |          |
| <b>Totals</b>   | <b>28-65</b> | <b>3-9</b> | <b>9-11</b> | <b>41</b> | <b>17</b> | <b>68</b> | <b>12</b> | <b>11</b> | <b>2</b> | <b>5</b> |

**Halftime:** ILST 33, ISU 30. **Turnovers:** ILST 11, ISU 12. **FG%:** ILST .431, ISU .490. **3FG%:** ILST .333, ISU .143. **FT%:** ILST .818, ISU .375.

**Officials:** R. McCall, M. McMullen, E. Anderson. A- 5,970.

**Notes:** Illinois State uses 11-0 second half run to break open game. Sycamores again shoot 49 percent from field, but fail to convert from the free throw line. Avery records second 20-point outing of season.

## KANTE, HOWARD, LEAD SYCAMORES' DEFENSIVE EFFORT



# DJIBRIL KANTE

FORWARD  
6-8 • 245 • SENIOR  
BLOOMINGTON, IN  
(NORTH)

# 3

- Has four double-double performances this season
- Scored a career-high 20 points to go with 11 rebounds vs. SMS
- 10 points and a career-high 14 rebounds at Northern Iowa
- 18 points, seven rebounds at Southern Illinois
- 17 points, 10 rebounds, two blocks vs. Northern Iowa
- 13 points and 13 rebounds vs. Valparaiso
- Ranks second on ISU's career blocked shots chart

After an early experiment at forward, Kante has returned to the post position and is averaging 9.5 points and a team-leading 8.3 rebounds over 27.6 minutes. He lies second on the Indiana State career blocks list with 122. He earned MVC Player of the Week honors for the week of January 21-27 after notching his fourth double-double of the year (and seventh of his career) when he scored a career-high 20 points and grabbed 11 rebounds vs. SMS. Just one game earlier, he tallied 10 points and a career-high 14 rebounds at Northern Iowa, his second such effort against the Panthers, as he had 17 points to go with 10 rebounds in the seasons first meeting between the two schools. The Bloomington, IN, native, who hit 13-of-14 free throws at Wichita St., has posted seven games with double-figure rebound totals, including four consecutive games in which he crashed the boards for 10 rebounds vs. Northern Iowa, 13 against Evansville, 11 rebounds vs. Bowling Green and 10 rebounds vs. Ball State. He posted an earlier double-double with his 13-point, career-high 13-rebound outing against Valparaiso. He tallied a career-high 19 points, grabbed nine rebounds and blocked a pair of shots against Murray State. He nearly matched that scoring total with 18 points (and seven rebounds) at Southern Illinois. At Wyoming, he tallied a team-high 16 points to go with six boards, two blocks and one steal. Against JUPUI, he grabbed nine rebounds and blocked a trio of shots. He scored 11 points to go with six boards, two steals and one block at Creighton.



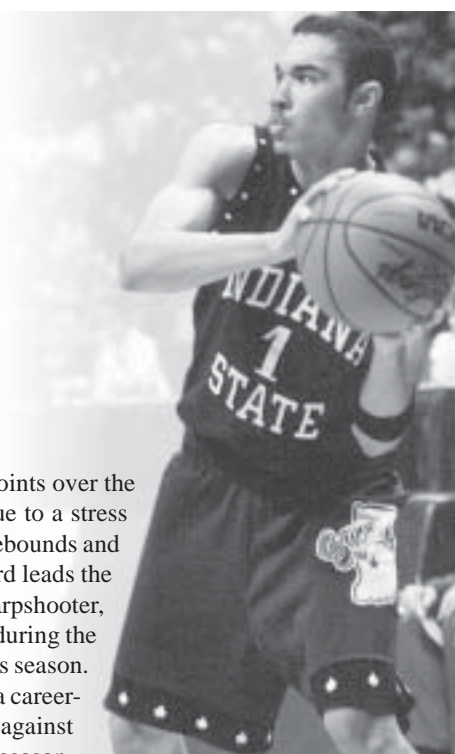
# MARCUS HOWARD

GUARD  
6-3 • 185 • SOPH.  
ELGIN, IL  
(HIGH)

# 1

- Scored a career-high 18 points against Northern Iowa
- Dished a career-high seven assists vs. Murray State
- Is the Sycamores' assist and steals leader
- Has reached double-figure scoring 11 times this season

After proving himself during last season's MVC and NCAA Tournament runs, averaging 10.5 points over the five games in which the Sycamores competed, he got his 2001-02 season off to a slow start due to a stress fracture in his foot. However, he has since recovered and has posted averages of 8.9 points, 2.4 rebounds and 2.6 assists per contest. One of the toughest defenders in the Missouri Valley Conference, Howard leads the Sycamores in steals, with 24. Given the assignment of guarding the oppositions top outside sharpshooter, Howard recently held UNI's Robbie Sieverding-the Valley's leading scorer- without a field goal during the Sycamores' 71-65 victory at UNI. Howard has also managed to display his offensive prowess this season. Thus far in 2001-02, Howard has posted 11 outings with double-figure scoring totals. He tallied a career-high 18 points (including four three-pointers) to go with five assists and just two turnovers against Northern Iowa. Against Wichita State, he tallied 17 points and a pair of steals. Earlier this season, against Murray State, the Elgin, IL, native dished seven assists while committing just one turnover.





## BLOCK, AVERY, SPARK SYCAMORES' OFFENSIVE GAME



### KELYN BLOCK

GUARD

6-3 • 200 • SENIOR

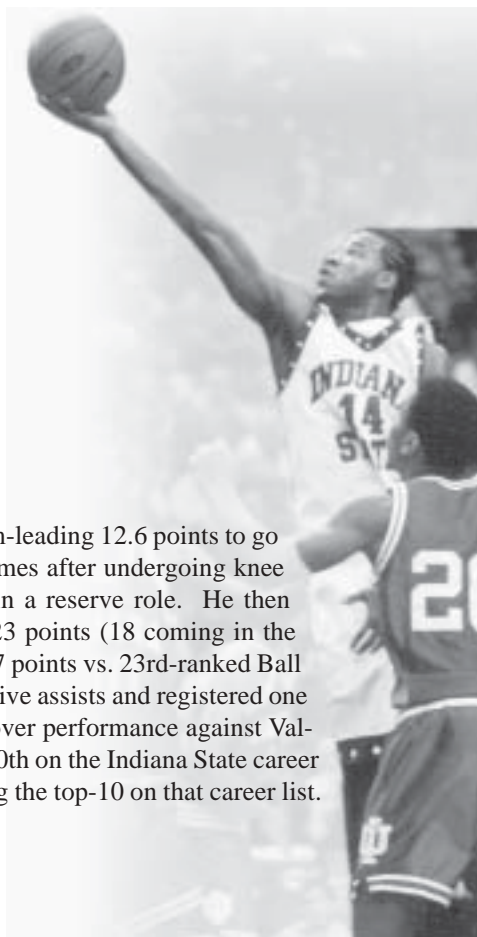
KANSAS CITY, KS

(SUMNER ACADEMY)

14

- Tallied a career-high 25 points at Wichita State,
- Scored 23 points at Drake, including four three-pointers
- Stands 17th on the Indiana State career scoring chart
- Has reached double-figure scoring 62 times during his career

One of the Missouri Conference's true all-around guards, Kelyn Block is averaging a team-leading 12.6 points to go with 4.6 rebounds, 2.7 assists and 33.8 minutes per game. Block, who missed seven games after undergoing knee surgery in early January, returned to action January 31 at Bradley, scoring 11 points in a reserve role. He then followed with a career-high 25 points at Wichita State. Earlier this season, he tallied 23 points (18 coming in the second half) at Drake, with four coming from beyond the three-point arc. He registered 17 points vs. 23rd-ranked Ball State. Block hit 15 points (hitting 7-of-12 from the field), grabbed five rebounds, dished five assists and registered one steal at Illinois-Chicago, then followed with a 10-point, six rebound, six assist, one turnover performance against Valparaiso. Against IUPUI, he slashed his way to a 16-point effort. Block currently stands 20th on the Indiana State career scoring list with 1,195 points, and his 95 career steals leaves him five steals shy of denting the top-10 on that career list.



### TERENCE AVERY

CENTER

6-9 • 240 • SENIOR

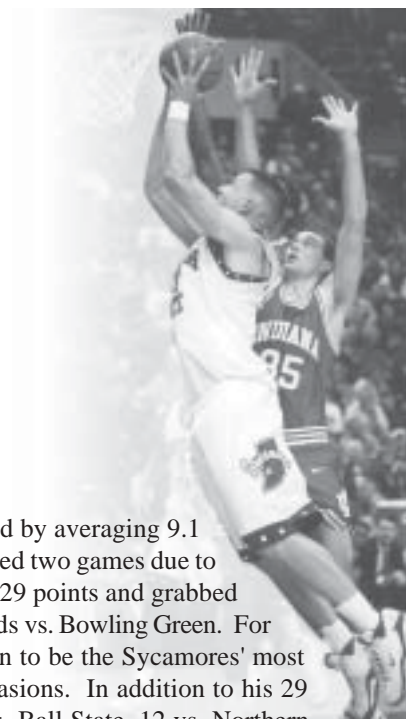
W. FRANKFORT, IL

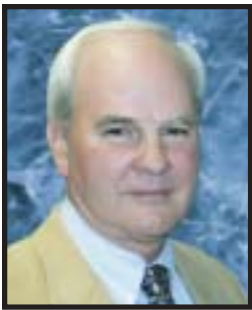
(HIGH)

31

- Scored a career-high 29 points at Eastern Illinois
- Tallied 22 points at Illinois State
- Matched a career-best with 12 rebounds (11 off., 1 def.) at Eastern Illinois
- Has reached double-figure scoring in eight games this season

Looked upon for increased production during his senior campaign, Terence Avery has responded by averaging 9.1 points and 5.4 rebounds over 26.6 minutes per game. The muscular Illinois native, who has missed two games due to a broken bone in his right hand, enjoyed a career-best outing at Eastern Illinois when he scored 29 points and grabbed 12 rebounds. Of those 12 caroms, 11 came on the offensive end. Avery also corralled 11 rebounds vs. Bowling Green. For the year, 47 of his 103 rebounds (46%) have come on the offensive boards. He has also proven to be the Sycamores' most consistent inside scoring threat this season, having reached double-figure scoring on eight occasions. In addition to his 29 points at E. Illinois, Avery has notched 22 points at Illinois State, 14 points at Wyoming, 13 vs. Ball State, 12 vs. Northern Iowa, 11 at Butler and has twice scored 10 points. He was a Missouri Valley Conference all-Bench honoree a year ago, averaging 8.2 points and 4.4 rebounds.





## ROYCE WALTMAN HEAD COACH

It took just three seasons as head coach at Indiana State University for Royce Waltman to return Sycamore basketball to the spotlight, attracting national attention unlike that since the fabled 1978-79 team danced to the NCAA Champion-

ship game. His efforts were rewarded by his being named as the 1999-2000 Missouri Valley Conference Coach Of The Year.

As if an encore was needed, Waltman, now in his fifth season at Indiana State, directed the 2000-01 Sycamores to their first MVC Tournament Championship since the 1978-79 campaign - leading Indiana State to consecutive NCAA Tournament appearances.

While Waltman will quickly deflect praise for what his 1999-2000 ballclub has accomplished as being due to the diligent efforts of his entire staff, the achievements which he and his program have attained this season certainly merit mention of the bold face, large type variety.

Be it a mid-December, 63-60, victory at Indiana to claim the Indiana Classic Championship, defeating the Hoosiers again - this time in Terre Haute, recording the University's first 20-win season in 21 years, claiming outright possession of Indiana State's first Missouri Valley Conference regular-season title over that same 21-year span or directing the Sycamores to consecutive NCAA Tournament appearances for the first time in the school's history, Waltman's dedication, or to use one of his favorite terms - passion - for his program and the game of basketball are nothing short of amazing.

But Waltman is no stranger to the national spotlight, having spent his first five years in collegiate coaching as an assistant to Bob Knight at Indiana University. In those five seasons, the Hoosiers compiled a 116-41 mark, captured the 1987 National Championship, made four trips to the NCAA Tournament and one appearance in the NIT Finals.

As the leader of the Sycamore program, Waltman has methodically built his program towards the level of success he experienced as an assistant. Implementing an extremely effective recruiting program upon his arrival, Waltman and his staff have built the foundation for what has become a highly successful operation. Recruiting what Waltman refers to as 'good kids', exceptional youngsters both on the court as well as away from the arena, he and his staff have molded the Sycamore basketball program into one of headline proportion.

He does so with a style and candor which is certainly refreshing in this sometimes ultra-intense sport. Whether it be stopping by the University Commons each morning for a cup of coffee or visiting with fans and supporters on the team bench during pre-game warm-ups, Waltman's approach to the game is much the same as it was when he was coaching at the lower levels.

In fact, Waltman is quick to acknowledge another coach or player who, somewhere along the line of his career, 'knows what it's like to get off the bus and play ball,' as Waltman is fond of saying.

Waltman's determination to produce a winning program became apparent in his initial two seasons as the Sycamores cap-

tured their first back-to-back winning seasons in 20 years. Entering year number-three, his Sycamores were picked to make a run for a Missouri Valley Conference Championship.

And run they did, taking the outright MVC regular-season title.

Winning games and quickly reversing the fortunes of struggling basketball programs is the hallmark of this veteran coach. Prior to his arrival at Indiana State, Waltman spent a decade resurrecting basketball programs at the University of Indianapolis and DePauw University.

Waltman came to Indiana State from the University of Indianapolis. Prior to the 1992-93 campaign, Waltman inherited an Indianapolis team that had a .327 winning percentage over the previous 14 seasons. By the time he was finished, Waltman had completely turned around the Greyhound program, compiling an overall winning record of 89-49 a winning percentage of .645.

From 1987-92, Waltman was the head coach at DePauw University in Greencastle, IN. During his five seasons at that Division III institution, Waltman compiled an overall record of 100-36. His teams were ranked number-one in the nation during both the 1988-89 and 1990-91 seasons.

Prior to becoming a collegiate coach, Waltman spent 15 years as head coach at Bedford High School in Bedford, PA, amassing an overall record of 276-110.

A native of Ellerslie, MD, Waltman graduated from Slippery Rock in 1964 with a degree in health and physical education. While at Slippery Rock, Waltman was a two-sport letterwinner, earning monograms in both baseball and basketball.

Waltman and his wife, Carole, reside in Terre Haute. They have a daughter, Suzanne, a son, Kevin, and two grandchildren, Samuel and Lilly.

### THE WALTMAN RECORD

#### HEAD COACH

| YEAR         | TEAM          | RECORD                | HIGHLIGHTS          |
|--------------|---------------|-----------------------|---------------------|
| 2000-01      | Indiana State | 22-12                 | NCAA South Region   |
| 1999-2000    | Indiana State | 22-10                 | NCAA West Region    |
| 1998-99      | Indiana State | 15-12                 |                     |
| 1997-98      | Indiana State | 16-11                 |                     |
| 1996-97      | Indianapolis  | 23-5                  |                     |
| 1995-96      | Indianapolis  | 20-9                  | NCAA Tournament     |
| 1994-95      | Indianapolis  | 16-11                 |                     |
| 1993-94      | Indianapolis  | 17-10                 |                     |
| 1992-93      | Indianapolis  | 13-14                 |                     |
| 1991-92      | DePauw        | 20-7                  | NCAA Tournament     |
| 1990-91      | DePauw        | 20-7                  | NCAA Tournament     |
| 1989-90      | DePauw        | 24-7                  | National Runners-up |
| 1988-89      | DePauw        | 18-8                  |                     |
| 1987-88      | DePauw        | 18-8                  |                     |
| <b>TOTAL</b> |               | <b>264-131 (.668)</b> |                     |

#### ASSISTANT COACH

| YEAR    | TEAM    | RECORD | HIGHLIGHTS              |
|---------|---------|--------|-------------------------|
| 1986-87 | Indiana | 30-4   | NCAA National Champions |
| 1985-86 | Indiana | 21-8   | NCAA Tournament         |
| 1984-85 | Indiana | 19-14  | NIT Final Four          |
| 1983-84 | Indiana | 22-9   | NCAA Tournament         |
| 1982-83 | Indiana | 24-6   | NCAA Tournament         |

#### HIGH SCHOOL

| YEAR    | TEAM       | RECORD  | HIGHLIGHTS       |
|---------|------------|---------|------------------|
| 1971-86 | Bedford HS | 276-110 | 11 League titles |





## SYCAMORE SEASON CAPSULES

### #11-MATT BERRY, G, 6-5, So-1L, TULSA, OK

- Averaging 5.4 points, 3.4 rebounds and 21.8 minutes.
- Has logged three starting appearances over 21 games.
- Has reached double-figure scoring four times this season.
- Scored a career-high 15 points (including three 3's) at Butler.
- Recording 14 points vs. Murray St.
- Registered 12 points, four rebounds, two steals vs. Creighton.
- Tallied 11 points, three assists and a career-high four steals at Northern Iowa.
- Grabbed a career-high 13 rebounds against IUPUI.
- Recorded seven rebounds at Drake, six rebounds at E. Illinois and five rebounds on five occasions.
- Registered three assists, three steals and a blocked shot at Southern Illinois.
- Had a career-best two blocked shots at UIC.

### BERRY GAME-BY-GAME

| Opponent      | St.    | FG  | 3fg-A | FT     | O-R-Reb | PF | Pts.    | A-T-Bk-St |
|---------------|--------|-----|-------|--------|---------|----|---------|-----------|
| @UIC          | 1-4    | 1-1 | 0-0   | 1-4-5  | 3       | 3  | 0-3-2-0 |           |
| Valparaiso    | * 1-6  | 1-4 | 1-2   | 1-4-5  | 2       | 4  | 2-4-0-1 |           |
| @Butler       | 6-12   | 3-6 | 0-0   | 1-4-5  | 2       | 15 | 1-1-0-0 |           |
| @E. Illinois  | 1-7    | 0-5 | 0-0   | 0-6-6  | 2       | 2  | 0-2-0-0 |           |
| IUPUI         | 3-7    | 2-4 | 0-2   | 4-9-13 | 3       | 8  | 2-1-0-1 |           |
| Murray St.    | * 4-10 | 2-7 | 4-4   | 0-1-1  | 1       | 14 | 1-1-1-1 |           |
| @Drake        | * 3-12 | 3-8 | 0-0   | 2-5-7  | 2       | 9  | 3-2-0-1 |           |
| @Creighton    | 0-3    | 0-1 | 0-0   | 0-1-1  | 1       | 0  | 0-3-0-0 |           |
| @Wyoming      | * 1-4  | 0-2 | 0-0   | 0-0-0  | 0       | 2  | 0-0-0-1 |           |
| Ball St.      | 1-6    | 0-4 | 0-0   | 0-1-1  | 5       | 2  | 0-1-0-2 |           |
| B'ling Green  | 0-0    | 0-0 | 4-4   | 0-0-0  | 1       | 4  | 1-0-0-0 |           |
| Evansville    | 3-9    | 0-1 | 0-3   | 0-5-5  | 1       | 6  | 0-1-0-1 |           |
| Northern Iowa | 2-5    | 1-2 | 0-0   | 0-5-5  | 1       | 6  | 1-0-0-1 |           |
| @Illinois St. | 1-5    | 0-3 | 0-2   | 0-3-3  | 2       | 2  | 0-0-0-0 |           |
| Wichita St.   | 2-6    | 1-3 | 1-2   | 3-1-4  | 2       | 6  | 1-3-0-1 |           |
| @S. Illinois  | 0-3    | 0-1 | 0-0   | 1-2-3  | 3       | 0  | 3-2-1-3 |           |
| @N. Iowa      | 4-7    | 3-5 | 0-0   | 1-0-1  | 1       | 11 | 3-3-0-4 |           |
| SMS           | 0-4    | 0-1 | 0-0   | 0-1-1  | 1       | 0  | 0-0-0-0 |           |
| @Bradley      | 2-3    | 1-2 | 0-0   | 0-0-0  | 1       | 5  | 0-1-2-0 |           |
| @Wichita St.  | 1-3    | 1-3 | 0-3   | 0-2-2  | 5       | 3  | 2-2-0-0 |           |
| Creighton     | 5-11   | 2-5 | 0-1   | 2-2-4  | 0       | 12 | 1-1-0-2 |           |
| Illinois St.  |        |     |       |        |         |    |         |           |
| Bradley       |        |     |       |        |         |    |         |           |
| @Evansville   |        |     |       |        |         |    |         |           |
| Drake         |        |     |       |        |         |    |         |           |
| S. Illinois   |        |     |       |        |         |    |         |           |
| at SMS        |        |     |       |        |         |    |         |           |

### #14-KELYN BLOCK, G, 6-2, SR-3L, KANSAS CITY, KS

- Averaging 12.6 points, 4.86rebounds, 2.7 assists and 33.8 minutes.
- Missed seven games due to knee surgery in early January.
- Has made 13 starts over 14 contests this season.
- A preseason first-team all-MVC pick.
- Scored a career-high 25 points, along with five rebounds at Wichita St.
- Tallied 23 points, including four three-pointers, at Drake.
- Registered 17 points, seven rebounds and three assists, one block and one steal vs. Ball State.
- Scored 16 points against IUPUI.
- Had a game-high 15 points on seven-of-twelve shooting and dished five assists in season-opener at UIC.
- 12 points, eight rebounds and five assists against Murray State.
- Notched 10 points, six rebounds, six assists vs. Valparaiso.
- Dished seven assists vs. Bowling Green.
- Grabbed eight boards at Wyoming, seven rebounds at Butler.

### BLOCK GAME-BY-GAME

| Opponent      | St.    | FG  | 3fg-A | FT     | O-R-Reb | PF | Pts.    | A-T-Bk-St |
|---------------|--------|-----|-------|--------|---------|----|---------|-----------|
| @UIC          | * 7-12 | 0-2 | 1-2   | 1-4-5  | 0       | 15 | 5-4-0-1 |           |
| Valparaiso    | * 4-12 | 2-3 | 0-0   | 1-5-6  | 1       | 10 | 6-1-0-0 |           |
| @Butler       | * 1-9  | 0-1 | 0-0   | 0-7-7  | 2       | 2  | 1-3-2-1 |           |
| @E. Illinois  | * 3-8  | 2-4 | 0-0   | 0-2-2  | 1       | 8  | 0-4-1-0 |           |
| IUPUI         | * 5-12 | 1-4 | 5-5   | 0-3-3  | 2       | 16 | 2-5-0-1 |           |
| Murray St.    | * 4-7  | 1-1 | 3-4   | 1-7-8  | 3       | 12 | 5-4-0-0 |           |
| @Drake        | * 8-17 | 4-7 | 3-3   | 0-2-2  | 0       | 23 | 1-1-1-0 |           |
| @Creighton    | * 3-9  | 1-1 | 4-5   | 0-2-2  | 1       | 11 | 3-5-0-1 |           |
| @Wyoming      | * 3-8  | 0-1 | 3-3   | 1--7-8 | 0       | 9  | 0-2-0-0 |           |
| Ball St.      | * 4-6  | 0-1 | 9-13  | 1-6-7  | 2       | 17 | 3-3-1-1 |           |
| B'ling Green  | * 2-7  | 0-1 | 3-4   | 0-4-4  | 4       | 7  | 7-5-0-2 |           |
| Evansville    |        |     |       |        |         |    |         |           |
| Northern Iowa |        |     |       |        |         |    |         |           |
| @Illinois St. |        |     |       |        |         |    |         |           |
| Wichita St.   |        |     |       |        |         |    |         |           |
| @S. Illinois  |        |     |       |        |         |    |         |           |
| @N. Iowa      |        |     |       |        |         |    |         |           |
| SMS           |        |     |       |        |         |    |         |           |
| @Bradley      | * 4-7  | 1-2 | 2-4   | 1-2-3  | 0       | 11 | 1-0-0-0 |           |
| @Wichita St.  | * 7-14 | 3-7 | 8-13  | 1-5-6  | 3       | 25 | 2-2-0-0 |           |
| Creighton     | * 2-6  | 0-2 | 7-10  | 0-2-2  | 0       | 11 | 2-4-0-0 |           |
| Illinois St.  |        |     |       |        |         |    |         |           |
| Bradley       |        |     |       |        |         |    |         |           |
| @Evansville   |        |     |       |        |         |    |         |           |
| Drake         |        |     |       |        |         |    |         |           |
| S. Illinois   |        |     |       |        |         |    |         |           |
| at SMS        |        |     |       |        |         |    |         |           |

### #21-BATISTE HAYWOOD, G, 6-2, JR-TR, HAMMOND, IN

- Left squad on January 17.
- Averaged 2.4 points, 1.0 rebounds and 10.0 minutes per outing.
- Saw action in nine contests.
- Logged a season-high 25 minutes, with four assists and four steals at Wyoming.
- Tallied a season-high eight points and a season-best six assists vs. Wichita State.
- Registered five points, one assist and one steal at Illinois State.
- Scored five points, including a three-pointer, at Drake.
- Tallied four points and grabbed two rebounds at Creighton.
- Grabbed three rebounds at UIC.

### HAYWOOD GAME-BY-GAME

| Opponent      | St. | FG  | 3fg-A | FT    | O-R-Reb | PF | Pts.    | A-T-Bk-St |
|---------------|-----|-----|-------|-------|---------|----|---------|-----------|
| @UIC          | 0-3 | 0-2 | 0-0   | 0-3-3 | 1       | 0  | 0-0-0-0 |           |
| Valparaiso    | dnp |     |       |       |         |    |         |           |
| @Butler       | 0-0 | 0-0 | 0-0   | 0-0-0 | 1       | 0  | 0-1-0-0 |           |
| @E. Illinois  | dnp |     |       |       |         |    |         |           |
| IUPUI         | dnp |     |       |       |         |    |         |           |
| Murray St.    | dnp |     |       |       |         |    |         |           |
| @Drake        | 2-2 | 1-1 | 0-0   | 1-0-1 | 4       | 5  | 0-2-0-0 |           |
| @Creighton    | 1-1 | 0-0 | 2-2   | 0-2-2 | 0       | 4  | 0-1-0-1 |           |
| @Wyoming      | 1-7 | 0-0 | 0-2   | 0-2-2 | 1       | 2  | 4-4-0-4 |           |
| Ball St.      | 0-1 | 0-0 | 0-0   | 0-0-0 | 2       | 0  | 1-1-0-0 |           |
| B'ling Green  | dnp |     |       |       |         |    |         |           |
| Evansville    | 0-0 | 0-0 | 0-0   | 0-0-0 | 0       | 0  | 0-1-0-0 |           |
| Northern Iowa |     |     |       |       |         |    |         |           |
| @Illinois St. | 2-3 | 0-0 | 1-3   | 1-0-1 | 2       | 5  | 1-1-0-1 |           |
| Wichita St.   | 3-5 | 0-0 | 2-2   | 0-1-1 | 1       | 9  | 6-2-0-2 |           |
| @S. Illinois  | dnp |     |       |       |         |    |         |           |
| @N. Iowa      |     |     |       |       |         |    |         |           |
| SMS           |     |     |       |       |         |    |         |           |
| @Bradley      |     |     |       |       |         |    |         |           |
| @Wichita St.  |     |     |       |       |         |    |         |           |
| Creighton     |     |     |       |       |         |    |         |           |
| Illinois St.  |     |     |       |       |         |    |         |           |
| Bradley       |     |     |       |       |         |    |         |           |
| @Evansville   |     |     |       |       |         |    |         |           |
| Drake         |     |     |       |       |         |    |         |           |
| S. Illinois   |     |     |       |       |         |    |         |           |
| at SMS        |     |     |       |       |         |    |         |           |





## SYCAMORE SEASON CAPSULES

### #44-JEROD ADLER, C, 6-9, FR-HS, MONROE, IN

- Averaging 0.9 points, 0.8 rebounds and 7.3 minutes per game.
- Has made two starts while seeing action in 16 contests.
- Grabbed three rebounds over 26 minutes in a starting role at Bradley.
- Scored two points and pulled down two rebounds as a starter at Wichita St.
- Saw 15 minutes of action at Wyoming, scoring four points and grabbing a pair of rebounds.
- Also logged 15 minutes at Southern Illinois.
- Converted a three-point play vs. SMS.
- Blocked one shot in his first collegiate outing, at UIC.
- Recorded two rebounds, one point, one assist and one steal in 12 minutes of activity vs. Wichita State.

### ADLER GAME-BY-GAME

| Opponent      | St. | FG  | 3fg-A | FT  | O-R-Reb | PF | Pts. | A-T-Bk-St |
|---------------|-----|-----|-------|-----|---------|----|------|-----------|
| @UIC          |     | 0-0 | 0-0   | 0-0 | 0-0-0   | 2  | 0    | 0-0-1-0   |
| Valparaiso    |     | 0-0 | 0-0   | 0-0 | 0-0-0   | 0  | 0    | 0-0-0-1   |
| @Butler       |     | 0-0 | 0-0   | 0-0 | 0-0-0   | 1  | 0    | 0-1-0-0   |
| @E. Illinois  |     | dnp |       |     |         |    |      |           |
| IUPUI         |     | 0-1 | 0-0   | 0-0 | 0-0-0   | 0  | 0    | 0-0-0-0   |
| Murray St.    |     | 0-0 | 0-0   | 0-0 | 0-0-0   | 1  | 0    | 0-1-0-0   |
| @Drake        |     | 0-0 | 0-0   | 0-0 | 0-0-0   | 0  | 0    | 0-0-0-0   |
| @Creighton    |     | 0-0 | 0-0   | 0-0 | 0-0-0   | 0  | 0    | 0-0-0-0   |
| @Wyoming      |     | 1-3 | 0-0   | 2-2 | 1-1-2   | 3  | 4    | 0-0-0-0   |
| Ball St.      |     | dnp |       |     |         |    |      |           |
| B'ling Green  |     | dnp |       |     |         |    |      |           |
| Evansville    |     | dnp |       |     |         |    |      |           |
| Northern Iowa |     | dnp |       |     |         |    |      |           |
| @Illinois St. |     | 0-0 | 0-0   | 0-0 | 0-0-0   | 0  | 0    | 0-0-0-0   |
| Wichita St.   |     | 0-1 | 0-0   | 1-3 | 1-1-2   | 2  | 1    | 1-0-0-1   |
| @S. Illinois  |     | 0-1 | 0-0   | 1-4 | 0-1-1   | 3  | 1    | 0-2-0-0   |
| @N. Iowa      |     | 0-0 | 0-0   | 0-0 | 0-0-0   | 0  | 0    | 0-0-0-0   |
| SMS           |     | 1-1 | 0-0   | 1-1 | 0-0-0   | 1  | 3    | 0-0-0-0   |
| @Bradley      | *   | 1-5 | 0-0   | 1-1 | 2-1-3   | 5  | 3    | 1-0-1-0   |
| @Wichita St.  | *   | 0-2 | 0-0   | 2-4 | 1-1-2   | 5  | 2    | 1-0-0-0   |
| Creighton     |     | 0-0 | 0-0   | 0-0 | 0-2-2   | 0  | 0    | 0-1-0-0   |
| Illinois St.  |     |     |       |     |         |    |      |           |
| Bradley       |     |     |       |     |         |    |      |           |
| @Evansville   |     |     |       |     |         |    |      |           |
| Drake         |     |     |       |     |         |    |      |           |
| S. Illinois   |     |     |       |     |         |    |      |           |
| at SMS        |     |     |       |     |         |    |      |           |

### #50-MICHAEL KERNAN, C, 6-11, FR-RS, ST. LOUIS, MO

- Averaging 1.5 points, 0.3 rebounds and 4.3 minutes.
- Has seen action in six games.
- Made first career start vs. Wichita State.
- Scored a career-high five points at Southern Illinois.
- Tallied two points, one rebound in nine minutes at UIC.
- Hit a pair of free throws vs. Valparaiso.
- Left foot injury prevented his playing in five contests.

### KERNAN GAME-BY-GAME

| Opponent      | St. | FG      | 3fg-A | FT  | O-R-Reb | PF | Pts. | A-T-Bk-St |
|---------------|-----|---------|-------|-----|---------|----|------|-----------|
| @UIC          |     | 1-4     | 0-1   | 0-0 | 1-0-1   | 2  | 0    | 1-0-0-0   |
| Valparaiso    |     | 0-1     | 0-0   | 2-2 | 0-0-0   | 2  | 0    | 0-0-0-0   |
| @Butler       |     | dnp     |       |     |         |    |      |           |
| @E. Illinois  |     | dnp     |       |     |         |    |      |           |
| IUPUI         |     | 0-1     | 0-0   | 0-0 | 0-0-0   | 2  | 0    | 0-0-0-0   |
| Murray St.    |     | dnp     |       |     |         |    |      |           |
| @Drake        |     | 0-0     | 0-0   | 0-0 | 0-0-0   | 0  | 0    | 0-0-0-0   |
| @Creighton    |     | injured |       |     |         |    |      |           |
| @Wyoming      |     | injured |       |     |         |    |      |           |
| Ball St.      |     | injured |       |     |         |    |      |           |
| B'ling Green  |     | injured |       |     |         |    |      |           |
| Evansville    |     | injured |       |     |         |    |      |           |
| Northern Iowa |     | dnp     |       |     |         |    |      |           |
| @Illinois St. |     | dnp     |       |     |         |    |      |           |
| Wichita St.   | *   | 0-1     | 0-1   | 0-0 | 0-0-0   | 0  | 0    | 1-0-0-0   |
| @S. Illinois  |     | 2-5     | 1-2   | 0-0 | 1-0-1   | 0  | 5    | 0-0-0-0   |
| @N. Iowa      |     | dnp     |       |     |         |    |      |           |
| SMS           |     | dnp     |       |     |         |    |      |           |
| @Bradley      |     | dnp     |       |     |         |    |      |           |
| @Wichita St.  |     | dnp     |       |     |         |    |      |           |
| Creighton     |     | dnp     |       |     |         |    |      |           |
| Illinois St.  |     |         |       |     |         |    |      |           |
| Bradley       |     |         |       |     |         |    |      |           |
| @Evansville   |     |         |       |     |         |    |      |           |
| Drake         |     |         |       |     |         |    |      |           |
| S. Illinois   |     |         |       |     |         |    |      |           |
| at SMS        |     |         |       |     |         |    |      |           |

## SYCAMORES AMONG MVC LEADERS

### TEAM RANKINGS

|                               |            |
|-------------------------------|------------|
| Scoring Defense .....         | Ppg., Rank |
| .....                         | 67.3, 3rd  |
| Rebounds .....                | Rpg., Rank |
| .....                         | 32.7, 6th  |
| Blocks .....                  | Bpg., Rank |
| .....                         | 3.29, T3rd |
| Field Goal Pct. Defense ..... | Pct., Rank |
| .....                         | 43.4, 4th  |
| 3-Point Pct. Defense .....    | Pct., Rank |
| .....                         | 35.1, 4th  |

### INDIVIDUAL RANKINGS

|                             |            |
|-----------------------------|------------|
| Rebounds .....              | Rpg., Rank |
| Djibril Kante .....         | 8.3, 2nd   |
| Terence Avery .....         | 5.4, 13th  |
| Defensive Rebounds .....    | Rpg., Rank |
| Djibril Kante .....         | 5.62, 2nd  |
| Offensive Rebounds .....    | Rpg., Rank |
| Djibril Kante .....         | 2.71, T4th |
| Terence Avery .....         | 2.47, 10th |
| Field Goal Percentage ..... | Pct., Rank |
| Terence Avery .....         | 54.6, 5th  |
| Djibril Kante .....         | 50.4, 10th |

|                     |             |
|---------------------|-------------|
| Blocks .....        | Bpg., Rank  |
| Djibril Kante ..... | 1.19, 5th   |
| Terence Avery ..... | 0.79, 9th   |
| Assists .....       | Appg., Rank |
| Marcus Howard ..... | 2.62, T15th |

## SYCAMORE CAREER HIGHS

### #1 Marcus Howard, 6-3, So-1L, Elgin, IL

Points ..... 18, vs. Northern Iowa, 1/10/02  
 Rebounds ..... 5, at Southern Illinois, 1/19/02  
 Assists ..... 7, vs. Murray St., 12/3/01  
 Blocked Shots ..... 2, vs. Wichita State, 1/14/01  
 Steals ..... 5, vs. Evansville, 1/5/02  
 Minutes ..... 38, vs. Wichita State, 1/16/02  
 Field Goals ..... 7, at Wichita State, 2/3/02  
 Field Goal Attempts ..... 16, twice, most recently at Wichita State, 2/3/02  
 3-Point FGs ..... 4, three, most recently vs. Northern Iowa, 1/10/02  
 3-Point FG Attempts ..... 7, four, most recently vs. Northern Iowa, 1/10/02  
 Free Throws ..... 6, vs. IUPUI, 12/1/01  
 Free Throw Attempts ..... 6, twice, recently vs. Bowling Green, 12/29/01

### #3 Djibril Kante, 6-7, Sr-3L, Bloomington, IN

Points ..... 20, vs. SMS, 1/27/02  
 Rebounds ..... 14, at Northern Iowa, 1/23/02  
 Assists ..... 3, four times, most recently vs. Evansville, 1/5/02  
 Blocked Shots ..... 6, twice, most recently at SMS, 2/24/01  
 Steals ..... 4, vs. Appalachian St., 12/30/00  
 Minutes ..... 39, at Northern Iowa, 1/23/02  
 Field Goals ..... 8, twice, most recently vs. Northern Iowa, 1/10/02  
 Field Goal Attempts ..... 12, twice, most recently vs. SMS, 1/27/02  
 3-Point FGs ..... 1, three times, most recently vs. Valparaiso, 11/21/01  
 3-Point FG Attempts ..... 3, vs. Valparaiso, 11/21/01  
 Free Throws ..... 13, at Wichita State, 2/3/02  
 Free Throw Attempts ..... 14, at Wichita State, 2/3/02

### #10 Lamar Grimes, 6-0, Fr-HS, Chicago, IL

Points ..... 21, twice, most recently at Bradley, 1/31/02  
 Rebounds ..... 5, twice, most recently at Wyoming, 12/19/01  
 Assists ..... 9, vs. Northern Iowa, 1/10/02  
 Blocked Shots ..... 2, vs. Northern Iowa, 1/10/02  
 Steals ..... 4, at Bradley, 1/31/02  
 Minutes ..... 39, vs. Evansville, 1/5/02  
 Field Goals ..... 9, at Southern Illinois, 1/19/02  
 Field Goal Attempts ..... 17, at Southern Illinois, 1/19/02  
 3-Point FGs ..... 2, three times, most recently vs. SMS, 1/27/02  
 3-Point FG Attempts ..... 4, vs. SMS, 1/27/02  
 Free Throws ..... 7, at Bradley, 1/31/02  
 Free Throw Attempts ..... 9, at Bradley, 1/31/02

### #11 Matt Berry, 6-5, So-1L, Tulsa, OK

Points ..... 15, at Butler, 11/25/01  
 Rebounds ..... 13, vs. IUPUI, 12/1/01  
 Assists ..... 4, vs. Evansville, 2/21/01  
 Blocked Shots ..... 2, twice, most recently at Bradley, 1/31/02  
 Steals ..... 4, at Northern Iowa, 1/23/02  
 Minutes ..... 33, at Drake, 12/9/01  
 Field Goals ..... 6, at Butler, 11/25/01  
 Field Goal Attempts ..... 12, twice, most recently at Drake, 12/9/01  
 3-Point FGs ..... 3, three times, most recently at Northern Iowa, 1/23/02  
 3-Point FG Attempts ..... 8, at Drake, 12/9/01  
 Free Throws ..... 4, twice, recently vs. Bowling Green, 12/29/01  
 Free Throw Attempts ..... 4, three, recently vs. Bowling Green, 12/29/01

### #14 Kelyn Block, 6-3, Sr-3L, Kansas City, KS

Points ..... 25, at Wichita State, 2/3/02  
 Rebounds ..... 9, at American Univ., P.R., 11/24/00  
 Assists ..... 8, at Creighton, 2/16/00  
 Blocked Shots ..... 3, vs. Creighton, 1/17/99  
 Steals ..... 5, at Illinois State, 1/12/00  
 Minutes ..... 42, at Ball State, 12/16/00  
 Field Goals ..... 10, at SMS, 2/24/01  
 Field Goal Attempts ..... 17, at Drake, 12/9/01  
 3-Point FGs ..... 5, at Evansville, 1/19/01  
 3-Point FG Attempts ..... 7, twice, most recently at Wichita State, 2/3/02  
 Free Throws ..... 10, vs. Bradley, 3/5/01  
 Free Throw Attempts ..... 13, three, most recently at Wichita State, 2/3/02

### #21 Batiste Haywood, 6-2, Jr-TR, Hammond, IN

Points ..... 8, vs. Wichita State, 1/16/02  
 Rebounds ..... 3, at Illinois-Chicago, 11/18/01  
 Assists ..... 6, vs. Wichita State, 1/16/02  
 Blocked Shots .....  
 Steals ..... 4, at Wyoming, 12/19/01  
 Minutes ..... 25, at Wyoming, 12/19/01  
 Field Goals ..... 3, vs. Wichita State, 1/16/02  
 Field Goal Attempts ..... 7, at Wyoming, 12/19/01  
 3-Point FGs ..... 1, at Drake, 12/9/01  
 3-Point FG Attempts ..... 2, at Illinois-Chicago, 11/18/01  
 Free Throws ..... 2, twice, most recently vs. Wichita State, 1/16/02  
 Free Throw Attempts ..... 3, at Illinois State, 1/12/02

### #31 Terence Avery, 6-9, Sr-2L, West Frankfort, IL

Points ..... 29, at Eastern Illinois, 11/28/01  
 Rebounds ..... 12, twice, most recently at Eastern Illinois, 11/28/01  
 Assists ..... 2, five times, most recently vs. Valparaiso, 11/21/01  
 Blocked Shots ..... 3, vs. Appalachian St., 12/30/00  
 Steals ..... 3, at Illinois State, 1/12/02  
 Minutes ..... 39, vs. Austin Peay, 12/2/00  
 Field Goals ..... 11, at Eastern Illinois, 11/28/01  
 Field Goal Attempts ..... 18, at Eastern Illinois, 11/28/01  
 3-Point FGs ..... 1, at Wyoming, 12/19/01  
 3-Point FG Attempts ..... 1, at Wyoming, 12/19/01  
 Free Throws ..... 8, vs. Appalachian St., 12/30/00  
 Free Throw Attempts ..... 11, vs. Appalachian St., 12/30/00

### #34 Jake Sams, 6-8, Fr-HS, Mount Zion, IL

Points ..... 13, at Butler, 11/25/01  
 Rebounds ..... 5, twice, most recently vs. SMS, 1/27/02  
 Assists ..... 1, three times, most recently vs. Creighton, 2/6/02  
 Blocked Shots ..... 1, five times, most recently vs. SMS, 1/27/02  
 Steals ..... 1, twice, most recently vs. Wichita State, 1/16/02  
 Minutes ..... 29, at Butler, 11/25/01  
 Field Goals ..... 5, at Butler, 11/25/01  
 Field Goal Attempts ..... 11, at Butler, 11/25/01  
 3-Point FGs ..... 3, three times, most recently at Northern Iowa, 1/23/02  
 3-Point FG Attempts ..... 6, twice, most recently at Southern Illinois, 1/19/02  
 Free Throws ..... 2, vs. Wichita State, 1/16/02  
 Free Throw Attempts ..... 4, vs. Northern Iowa, 1/10/02

### #40 Matt Broermann, 6-5, Jr-2L, Hamilton, OH

Points ..... 24, vs. Wichita State, 1/16/02  
 Rebounds ..... 7, at Southern Illinois, 1/19/02  
 Assists ..... 4, vs. Elon, 12/18/00  
 Blocked Shots ..... 1, twice, most recently at Butler, 11/25/01  
 Steals ..... 2, four times, most recently at Northern Iowa, 1/23/02  
 Minutes ..... 40, vs. Wichita State, 1/16/02  
 Field Goals ..... 8, vs. Wichita State, 1/16/02  
 Field Goal Attempts ..... 11, vs. Wichita State, 1/16/02  
 3-Point FGs ..... 8, vs. Wichita State, 1/16/02  
 3-Point FG Attempts ..... 11, vs. Wichita State, 1/16/02  
 Free Throws ..... 4, vs. Evansville, 1/5/02  
 Free Throw Attempts ..... 6, vs. Evansville, 1/5/02

### #44 Jerod Adler, 6-9, Fr-HS, Monroe, IN

Points ..... 4, at Wyoming, 12/19/01  
 Rebounds ..... 3, at Bradley, 1/31/02  
 Assists ..... 1, three times, most recently at Wichita State, 2/3/02  
 Blocked Shots ..... 1, twice, most recently at Bradley, 1/31/02  
 Steals ..... 1, twice, most recently vs. Wichita State, 1/16/02  
 Minutes ..... 26, at Bradley, 1/31/02  
 Field Goals ..... 1, three times, most recently at Bradley, 1/31/02  
 Field Goal Attempts ..... 5, at Bradley, 1/31/02  
 3-Point FGs .....  
 3-Point FG Attempts .....  
 Free Throws ..... 2, twice, most recently at Wichita State, 2/3/02  
 Free Throw Attempts ..... 4, twice, most recently at Wichita State, 2/3/02

### #50 Michael Kernan, 6-11, So-1L, St. Louis, MO

Points ..... 5, at Southern Illinois, 1/19/02  
 Rebounds ..... 2, vs. Evansville, 2/21/01  
 Assists ..... 1, at Illinois-Chicago, 11/18/01  
 Blocked Shots ..... 1, twice, most recently vs. Evansville, 2/21/01  
 Steals ..... 1, at Wichita State, 1/27/01  
 Minutes ..... 13, vs. Austin Peay, 12/2/00  
 Field Goals ..... 2, twice, most recently at Southern Illinois, 1/19/02  
 Field Goal Attempts ..... 5, at Southern Illinois, 1/19/02  
 3-Point FGs ..... 1, at Southern Illinois, 1/19/02  
 3-Point FG Attempts ..... 1, three, most recently at Southern Illinois, 1/19/02  
 Free Throws ..... 2, twice, most recently vs. Valparaiso, 11/21/01  
 Free Throw Attempts ..... 4, vs. Wichita State, 1/14/01

## 2001-02 SYCAMORE BASKETBALL RESULTS

| ISU | OPPONENT                 | W-L | REC | ATT-SITE  | HI-SCORER | HI-REBOUND         | ISU FG           | OPP FG     | ISU FT     | ISU OPP    |            |       |     |
|-----|--------------------------|-----|-----|-----------|-----------|--------------------|------------------|------------|------------|------------|------------|-------|-----|
|     |                          |     |     |           |           |                    |                  |            |            | OPP FT     | REBS       | DIF   |     |
| 54  | @Illinois-Chicago ..     | 70  | L   | 0-1       | 4,170-A   | 15-Block           | 5-three players  | 22-50 .440 | 28-68 .412 | 6-8 .750   | 7-10 .700  | 29 41 | -12 |
| 54  | Valparaiso .....         | 71  | L   | 0-2       | 6,252-H   | 13-Kante           | 13-Kante         | 21-58 .362 | 28-57 .491 | 6-10 .600  | 5-9 .556   | 36 36 | 0   |
| 49  | at Butler .....          | 69  | L   | 0-3       | 5,670-A   | 15-Berry           | 9-Avery          | 19-56 .339 | 27-57 .474 | 3-6 .500   | 8-13 .615  | 38 32 | +6  |
| 50  | at Eastern Illinois .... | 52  | L   | 0-4       | 2,213-A   | 29-Avery           | 12-Avery         | 19-56 .339 | 19-52 .365 | 10-12 .833 | 11-15 .733 | 40 31 | +9  |
| 66  | IUPUI .....              | 56  | W   | 1-4       | 4,483-H   | 16-Block           | 13-Berry         | 21-52 .404 | 22-61 .361 | 16-19 .842 | 7-10 .700  | 43 31 | +12 |
| 74  | Murray State .....       | 66  | W   | 2-4       | 4,722-H   | 19-Kante           | 9-Kante          | 25-54 .463 | 24-62 .387 | 20-28 .714 | 13-19 .684 | 34 42 | -8  |
| 71  | *at Drake .....          | 85  | L   | 2-5/0-1   | 3,894-A   | 23-Block           | 8-Avery, Kante   | 26-61 .426 | 27-59 .458 | 7-11 .636  | 20-29 .690 | 33 41 | -8  |
| 46  | *at Creighton .....      | 70  | L   | 2-6/0-2   | 6,924-A   | 11-Block, Kante    | 6-Kante          | 15-42 .357 | 28-58 .483 | 12-18 .667 | 9-11 .818  | 23 36 | -13 |
| 58  | at Wyoming .....         | 72  | L   | 2-7       | 7,676-A   | 16-Kante           | 8-Block          | 20-52 .385 | 25-67 .373 | 16-23 .696 | 13-21 .619 | 35 47 | -12 |
| 54  | #23 Ball State .....     | 68  | L   | 2-8       | 6,651-H   | 17-Block           | 10-Kante         | 19-50 .380 | 23-48 .479 | 11-19 .579 | 16-21 .762 | 30 35 | -5  |
| 55  | Bowling Green .....      | 65  | L   | 2-9       | 4,560-H   | 10-Howard          | 11-Avery, Kante  | 17-46 .370 | 24-51 .471 | 17-36 .472 | 10-16 .625 | 38 32 | +6  |
| 45  | *Evansville .....        | 40  | W   | 3-9/1-2   | 4,981-H   | 11-Grimes          | 13-Kante         | 16-48 .333 | 16-57 .281 | 12-25 .480 | 2-5 .400   | 40 43 | -3  |
| 70  | *Northern Iowa .....     | 71  | L   | 3-10/1-3  | 4,825-H   | 18-Howard          | 10-Kante         | 28-57 .491 | 27-56 .482 | 6-11 .545  | 11-13 .846 | 32 29 | +3  |
| 56  | *@Illinois State .....   | 68  | L   | 3-11/1-4  | 5,790-A   | 22-Avery           | 7-Kante          | 24-49 .490 | 28-65 .431 | 6-16 .375  | 9-11 .818  | 30 41 | -11 |
| 63  | *Wichita State .....     | 64  | L   | 3-12/1-5  | 4,721-H   | 24-Broermann       | 8-Kante          | 20-47 .426 | 24-55 .436 | 14-24 .583 | 12-18 .667 | 31 37 | -6  |
| 73  | *@Southern Illinois ...  | 91  | L   | 3-13/1-6  | 7,154-A   | 21-Grimes          | 7-Br'mann, Kante | 26-58 .448 | 35-72 .486 | 11-17 .647 | 10-21 .476 | 31 49 | -18 |
| 71  | *@Northern Iowa ...      | 65  | W   | 4-13/2-6  | 2,168-A   | 14-Howard          | 14-Kante         | 25-49 .510 | 22-51 .431 | 12-17 .706 | 14-25 .560 | 32 29 | +3  |
| 53  | *SMS .....               | 59  | L   | 4-14/2-7  | 5,118-H   | 20-Kante           | 11-Kante         | 19-57 .333 | 19-43 .442 | 11-19 .579 | 18-25 .720 | 33 39 | -6  |
| 57  | *@Bradley .....          | 60  | L   | 4-15/2-8  | 8,428-A   | 21-Grimes          | 7-Kante          | 19-47 .404 | 21-51 .412 | 16-21 .762 | 12-21 .571 | 27 39 | -12 |
| 84  | *@Wichita St. (OT)       | 87  | L   | 4-16/2-9  | 8,289-A   | 25-Block           | 6-Block, Kante   | 24-52 .462 | 28-53 .528 | 25-41 .610 | 27-34 .794 | 25 40 | -15 |
| 63  | *Creighton .....         | 64  | L   | 4-17/2-10 | 5,169-H   | 12-Berry,Broermann | 9-Kante          | 22-47 .468 | 26-57 .456 | 13-21 .619 | 6-11 .545  | 26 35 | -9  |

\* MVC contest

## 2001-02 SYCAMORE INDIVIDUAL POINTS, REBOUNDS, ASSISTS

| Opponent            | Adler  | Avery   | Berry   | Block   | Broermann | Grimes  | Haywood | Howard  | Kante    | Kernan | Sams    |
|---------------------|--------|---------|---------|---------|-----------|---------|---------|---------|----------|--------|---------|
| @Illinois-Chicago   | 0-0-0  | *10-5-0 | 3-5-0   | *15-5-5 | *6-2-2    | *8-0-2  | 0-3-0   | 4-0-0   | *6-4-2   | 2-1-1  | 0-1-0   |
| Valparaiso          | 0-0-0  | *10-2-2 | *4-5-2  | *10-6-6 | 2-0-2     | 3-5-1   | dnp     | *10-2-2 | *13-13-1 | 2-0-0  | 0-0-1   |
| @ Butler            | 0-0-0  | *11-9-0 | 15-5-0  | *2-7-1  | *3-1-1    | 0-1-5   | 0-0-0   | *3-3-2  | *2-2-1   | dnp    | 13-5-1  |
| @ E. Illinois       | dnp    | 29-12-1 | 2-6-0   | *8-2-0  | 0-2-2     | *2-4-2  | dnp     | *0-2-1  | *5-5-1   | dnp    | *4-3-0  |
| IUPUI               | 0-0-0  | *8-6-0  | 8-13-2  | *16-3-2 | *12-2-1   | 2-0-3   | dnp     | *11-3-4 | *6-9-1   | 0-0-0  | 3-1-0   |
| Murray State        | 0-0-0  | *8-8-0  | *14-1-1 | *12-8-5 | 0-1-0     | 9-1-0   | dnp     | *12-2-7 | *19-9-2  | dnp    | 0-0-0   |
| @ Drake             | 0-0-0  | 7-8-0   | *9-7-3  | *23-2-1 | *3-0-1    | 3-2-0   | 5-1-0   | *14-3-5 | *7-8-0   | 0-0-0  | 0-0-0   |
| @ Creighton         | 0-0-0  | *2-3-0  | 0-1-0   | *11-2-3 | *4-2-2    | 5-0-2   | 4-2-0   | *4-3-2  | *11-6-1  | inj    | 5-0-0   |
| @ Wyoming           | 4-2-0  | *14-6-0 | 2-0-0   | *9-8-0  | 0-1-1     | *7-5-1  | 2-2-4   | *4-2-3  | *16-6-1  | inj    | 0-0-0   |
| #23 Ball State      | dnp    | *13-3-0 | 2-1-0   | *17-7-3 | 3-4-2     | *8-1-1  | 0-0-1   | *8-0-2  | *1-10-0  | inj    | 2-1-0   |
| Bowling Green       | dnp    | 8-11-0  | 4-0-1   | *7-4-7  | *6-3-2    | 5-1-0   | dnp     | *10-2-2 | *6-11-0  | inj    | *9-3-0  |
| *Evansville         | dnp    | 4-4-0   | 6-5-0   | inj     | *4-6-2    | *11-4-4 | 0-0-0   | *9-4-1  | *8-13-3  | inj    | *3-0-0  |
| *Northern Iowa      | dnp    | 12-7-1  | 5-5-0   | inj     | *6-5-1    | *11-1-9 | inj     | *18-0-5 | *17-10-0 | dnp    | *1-2-0  |
| *@Illinois State    | 0-0-0  | *22-5-1 | 2-3-0   | inj     | *0-5-2    | *5-1-4  | 5-1-1   | *11-2-4 | *4-7-2   | dnp    | 7-2-0   |
| *Wichita State      | 1-2-1  | inj     | 6-4-1   | inj     | *24-4-0   | *10-4-0 | 8-1-6   | *6-4-3  | *6-8-1   | *0-0-1 | 2-3-0   |
| *@Southern Illinois | 1-1-0  | inj     | 0-3-3   | inj     | *6-7-2    | *21-1-3 | dnp     | *11-5-0 | *18-7-2  | 5-1-0  | *11-3-0 |
| *@Northern Iowa     | 0-0-0  | *1-3-0  | 11-1-3  | inj     | *13-4-0   | *13-2-2 |         | *14-4-3 | *10-14-0 | dnp    | 9-1-0   |
| *SMS                | 3-0-0  | 0-2-0   | 0-1-0   | inj     | *6-3-1    | *12-3-6 |         | *10-3-2 | *20-11-1 | dnp    | *2-5-0  |
| *@Bradley           | *3-3-1 | 6-4-0   | 5-0-0   | 11-3-1  | *5-1-3    | *21-1-4 |         | *6-3-2  | *0-7-0   | dnp    | 0-2-0   |
| *@Wichita State     | *2-2-1 | 2-01-0  | 3-2-2   | *25-6-2 | *6-2-0    | *9-1-2  |         | 17-2-1  | *17-6-0  | dnp    | 3-0-0   |
| *Creighton          | 0-2-0  | 6-4-0   | 12-4-1  | *11-2-2 | 12-3-3    | *7-0-3  |         | *4-2-4  | *7-9-1   | dnp    | *4-0-1  |

\*-starter



**SYCAMORE BASKETBALL NOTES ... PAGE FIFTEEN**

**Indiana State Season Statistics  
Indiana State Season Box Score (as of Feb. 6, 2002)  
All games**

|                     |                |             |             |                |
|---------------------|----------------|-------------|-------------|----------------|
| <b>RECORD:</b>      | <b>OVERALL</b> | <b>HOME</b> | <b>AWAY</b> | <b>NEUTRAL</b> |
| ALL GAMES.....      | (4-17)         | (3-7)       | (1-10)      | (0-0)          |
| CONFERENCE.....     | (2-10)         | (1-4)       | (1-6)       | (0-0)          |
| NON-CONFERENCE..... | (2-7)          | (2-3)       | (0-4)       | (0-0)          |

| ##             | Player               | GP-GS | Min-Avg  | -TOTAL-  |      | -3-PTS- |       | Pct     | FT-FTA | -REBOUNDS- |     |     | PF   | FO  | A | TO  | Blk | Stl | Pts | Avg  |      |     |
|----------------|----------------------|-------|----------|----------|------|---------|-------|---------|--------|------------|-----|-----|------|-----|---|-----|-----|-----|-----|------|------|-----|
|                |                      |       |          | FG-FGA   | Pct  | 3FG-FGA | Pct   |         |        | Pct        | Off | Def |      |     |   |     |     |     |     |      | Tot  | Avg |
| 14             | Block, Kelyn.....    | 14-13 | 473 33.8 | 57-134   | .425 | 15-37   | .405  | 48-66   | .727   | 7          | 58  | 65  | 4.6  | 19  | 0 | 38  | 43  | 5   | 7   | 177  | 12.6 |     |
| 03             | Kante, Djibril.....  | 21-21 | 580 27.6 | 64-127   | .504 | 1-5     | .200  | 70-123  | .569   | 57         | 118 | 175 | 8.3  | 68  | 2 | 20  | 42  | 25  | 19  | 199  | 9.5  |     |
| 31             | Avery, Terence.....  | 19-10 | 505 26.6 | 71-130   | .546 | 1-1     | 1.000 | 30-45   | .667   | 47         | 56  | 103 | 5.4  | 44  | 0 | 5   | 30  | 15  | 7   | 173  | 9.1  |     |
| 01             | Howard, Marcus.....  | 21-19 | 650 31.0 | 68-190   | .358 | 19-69   | .275  | 31-42   | .738   | 11         | 40  | 51  | 2.4  | 36  | 1 | 55  | 41  | 2   | 24  | 186  | 8.9  |     |
| 10             | Grimes, Lamar.....   | 21-14 | 494 23.5 | 65-151   | .430 | 13-34   | .382  | 29-50   | .580   | 11         | 27  | 38  | 1.8  | 58  | 2 | 54  | 62  | 7   | 16  | 172  | 8.2  |     |
| 40             | Broermann, Matt..... | 21-15 | 522 24.9 | 37-93    | .398 | 34-89   | .382  | 13-17   | .765   | 8          | 50  | 58  | 2.8  | 24  | 0 | 30  | 17  | 2   | 11  | 121  | 5.8  |     |
| 11             | Berry, Matt.....     | 21-3  | 458 21.8 | 41-127   | .323 | 21-68   | .309  | 10-23   | .435   | 16         | 56  | 72  | 3.4  | 39  | 2 | 20  | 33  | 6   | 18  | 113  | 5.4  |     |
| 34             | Sams, Jake.....      | 21-7  | 302 14.4 | 29-88    | .330 | 16-45   | .356  | 4-10    | .400   | 12         | 20  | 32  | 1.5  | 32  | 0 | 3   | 15  | 5   | 3   | 78   | 3.7  |     |
| 21             | Haywood, Batiste.... | 9-0   | 99 11.0  | 9-23     | .391 | 1-3     | .333  | 5-9     | .556   | 2          | 8   | 10  | 1.1  | 12  | 0 | 12  | 13  | 0   | 8   | 24   | 2.7  |     |
| 50             | Kernan, Michael..... | 6-1   | 26 4.3   | 3-11     | .273 | 1-4     | .250  | 2-2     | 1.000  | 2          | 0   | 2   | 0.3  | 2   | 0 | 2   | 0   | 0   | 0   | 9    | 1.5  |     |
| 44             | Adler, Jerod.....    | 16-2  | 116 7.3  | 3-14     | .214 | 0-0     | .000  | 8-15    | .533   | 5          | 7   | 12  | 0.8  | 20  | 1 | 3   | 5   | 2   | 2   | 14   | 0.9  |     |
| TEAM.....      |                      |       |          |          |      |         |       |         |        |            |     |     |      |     |   |     |     |     |     |      |      |     |
| Total.....     |                      | 21    | 4225     | 447-1088 | .411 | 122-355 | .344  | 250-402 | .622   | 211        | 475 | 686 | 32.7 | 354 | 8 | 242 | 303 | 69  | 115 | 1266 | 60.3 |     |
| Opponents..... |                      | 21    | 4225     | 521-1201 | .434 | 131-373 | .351  | 240-358 | .670   | 272        | 513 | 785 | 37.4 | 383 | - | 286 | 262 | 58  | 147 | 1413 | 67.3 |     |

**SCORE BY PERIODS:**

|                    |     |     |    |        |
|--------------------|-----|-----|----|--------|
|                    | 1st | 2nd | OT | Total  |
| Indiana State..... | 618 | 639 | 9  | - 1266 |
| Opponents.....     | 670 | 731 | 12 | - 1413 |

**DEADBALL REBOUNDS:**

|                    |     |     |       |
|--------------------|-----|-----|-------|
|                    | OFF | DEF | TOTAL |
| Indiana State..... | 65  | 4   | 69    |
| Opponents.....     | 47  | 4   | 51    |

**Indiana State Season Statistics  
Indiana State Season Box Score (as of Feb. 6, 2002)  
Conference games only**

|                 |                |             |             |                |
|-----------------|----------------|-------------|-------------|----------------|
| <b>RECORD:</b>  | <b>OVERALL</b> | <b>HOME</b> | <b>AWAY</b> | <b>NEUTRAL</b> |
| CONFERENCE..... | (2-10)         | (1-4)       | (1-6)       | (0-0)          |

| ##             | Player               | GP-GS | Min-Avg  | -TOTAL- |      | -3-PTS- |       | Pct     | FT-FTA | -REBOUNDS- |     |     | PF   | FO  | A | TO  | Blk | Stl | Pts | Avg |      |     |
|----------------|----------------------|-------|----------|---------|------|---------|-------|---------|--------|------------|-----|-----|------|-----|---|-----|-----|-----|-----|-----|------|-----|
|                |                      |       |          | FG-FGA  | Pct  | 3FG-FGA | Pct   |         |        | Pct        | Off | Def |      |     |   |     |     |     |     |     | Tot  | Avg |
| 14             | Block, Kelyn.....    | 5-4   | 169 33.8 | 24-53   | .453 | 9-19    | .474  | 24-35   | .686   | 2          | 13  | 15  | 3.0  | 4   | 0 | 9   | 12  | 1   | 1   | 81  | 16.2 |     |
| 10             | Grimes, Lamar.....   | 12-10 | 343 28.6 | 48-110  | .436 | 8-21    | .381  | 24-40   | .600   | 8          | 12  | 20  | 1.7  | 37  | 2 | 39  | 49  | 5   | 15  | 128 | 10.7 |     |
| 03             | Kante, Djibril.....  | 12-12 | 352 29.3 | 40-71   | .563 | 0-1     | .000  | 45-72   | .625   | 34         | 72  | 106 | 8.8  | 43  | 2 | 11  | 24  | 16  | 11  | 125 | 10.4 |     |
| 01             | Howard, Marcus.....  | 12-11 | 394 32.8 | 48-120  | .400 | 13-37   | .351  | 15-23   | .652   | 7          | 28  | 35  | 2.9  | 21  | 1 | 32  | 22  | 1   | 16  | 124 | 10.3 |     |
| 40             | Broermann, Matt..... | 12-11 | 345 28.8 | 26-59   | .441 | 25-57   | .439  | 12-16   | .750   | 5          | 37  | 42  | 3.5  | 17  | 0 | 17  | 10  | 1   | 9   | 89  | 7.4  |     |
| 31             | Avery, Terence.....  | 10-3  | 214 21.4 | 26-48   | .542 | 0-0     | .000  | 10-16   | .625   | 14         | 27  | 41  | 4.1  | 23  | 0 | 2   | 10  | 7   | 5   | 62  | 6.2  |     |
| 11             | Berry, Matt.....     | 12-1  | 271 22.6 | 23-71   | .324 | 12-35   | .343  | 1-11    | .091   | 9          | 27  | 36  | 3.0  | 20  | 1 | 13  | 20  | 3   | 12  | 59  | 4.9  |     |
| 21             | Haywood, Batiste.... | 5-0   | 53 10.6  | 8-12    | .667 | 1-1     | 1.000 | 5-7     | .714   | 2          | 3   | 5   | 1.0  | 7   | 0 | 7   | 7   | 0   | 4   | 22  | 4.4  |     |
| 34             | Sams, Jake.....      | 12-5  | 190 15.8 | 17-54   | .315 | 10-27   | .370  | 3-8     | .375   | 7          | 11  | 18  | 1.5  | 23  | 0 | 1   | 8   | 4   | 2   | 47  | 3.9  |     |
| 50             | Kernan, Michael..... | 3-1   | 15 5.0   | 2-6     | .333 | 1-3     | .333  | 0-0     | .000   | 1          | 0   | 1   | 0.3  | 0   | 0 | 1   | 0   | 0   | 0   | 5   | 1.7  |     |
| 44             | Adler, Jerod.....    | 10-2  | 79 7.9   | 2-10    | .200 | 0-0     | .000  | 6-13    | .462   | 4          | 6   | 10  | 1.0  | 13  | 1 | 3   | 3   | 1   | 1   | 10  | 1.0  |     |
| TEAM.....      |                      |       |          |         |      |         |       |         |        |            |     |     |      |     |   |     |     |     |     |     |      |     |
| Total.....     |                      | 12    | 2425     | 264-614 | .430 | 79-201  | .393  | 145-241 | .602   | 110        | 253 | 363 | 30.3 | 208 | 7 | 135 | 166 | 39  | 76  | 752 | 62.7 |     |
| Opponents..... |                      | 12    | 2425     | 301-678 | .444 | 72-200  | .360  | 150-224 | .670   | 163        | 295 | 458 | 38.2 | 219 | - | 162 | 154 | 32  | 80  | 824 | 68.7 |     |

**SCORE BY PERIODS:**

|                    |     |     |    |       |
|--------------------|-----|-----|----|-------|
|                    | 1st | 2nd | OT | Total |
| Indiana State..... | 356 | 387 | 9  | - 752 |
| Opponents.....     | 398 | 414 | 12 | - 824 |

**DEADBALL REBOUNDS:**

|                    |     |     |       |
|--------------------|-----|-----|-------|
|                    | OFF | DEF | TOTAL |
| Indiana State..... | 40  | 2   | 42    |
| Opponents.....     | 33  | 1   | 34    |

**SYCAMORE BASKETBALL NOTES ... PAGE SIXTEEN**

**Indiana State High/Low Analysis (as of Feb. 6, 2002)**

**Indiana State - TEAM GAME HIGHS**

|                            |              |                                 |
|----------------------------|--------------|---------------------------------|
| POINTS.....                | 84           | at Wichita State (02/03/02)     |
|                            | 74           | vs Murray State (12/3/01)       |
|                            | 73           | at Southern Illinois (01/19/02) |
|                            | 71           | at Northern Iowa (01/23/02)     |
|                            | 71           | at Drake University (12/9/01)   |
| FIELD GOALS MADE.....      | 28           | vs Northern Iowa (01/10/02)     |
|                            | 26           | at Southern Illinois (01/19/02) |
|                            | 26           | at Drake University (12/9/01)   |
| FIELD GOAL ATTEMPTS.....   | 61           | at Drake University (12/9/01)   |
|                            | 58           | at Southern Illinois (01/19/02) |
|                            | 58           | vs Valparaiso (11/21/01)        |
| FIELD GOAL PERCENTAGE..... | .510 (25-49) | at Northern Iowa (01/23/02)     |
|                            | .491 (28-57) | vs Northern Iowa (01/10/02)     |
| 3 PT FIELD GOALS MADE..... | 12           | at Drake University (12/9/01)   |
|                            | 11           | at Wichita State (02/03/02)     |
| 3 PT FG ATTEMPTS.....      | 26           | at Drake University (12/9/01)   |
|                            | 24           | at Wichita State (02/03/02)     |
| 3 PT FG PERCENTAGE.....    | .500 (10-20) | at Southern Illinois (01/19/02) |
|                            | .500 ( 9-18) | vs Wichita State (01/16/02)     |
|                            | .500 ( 8-16) | vs Northern Iowa (01/10/02)     |
| FREE THROWS MADE.....      | 25           | at Wichita State (02/03/02)     |
|                            | 20           | vs Murray State (12/3/01)       |
| FREE THROW ATTEMPTS.....   | 41           | at Wichita State (02/03/02)     |
|                            | 36           | vs Bowling Green (12/29/01)     |
| FREE THROW PERCENTAGE..... | .842 (16-19) | vs IUPUI (12/1/01)              |
|                            | .833 (10-12) | at Eastern Illinois (11/28/01)  |
| REBOUNDS.....              | 43           | vs IUPUI (12/1/01)              |
|                            | 40           | vs Evansville (01/05/02)        |
|                            | 40           | at Eastern Illinois (11/28/01)  |
| ASSISTS.....               | 17           | vs Valparaiso (11/21/01)        |
|                            | 16           | vs Northern Iowa (01/10/02)     |
| STEALS.....                | 11           | vs Evansville (01/05/02)        |
|                            | 10           | at Northern Iowa (01/23/02)     |
| BLOCKED SHOTS.....         | 7            | vs Evansville (01/05/02)        |
|                            | 6            | vs Northern Iowa (01/10/02)     |
|                            | 6            | vs Murray State (12/3/01)       |

**Indiana State - PLAYER HIGHS**

|                               |               |  |
|-------------------------------|---------------|--|
| POINTS.....                   | 29            | Avery, Terence at Eastern Illinois (11/28/01)  |
|                               | 25            | Block, Kelyn at Wichita State (02/03/02)       |
|                               | 24            | Broermann, Matt vs Wichita State (01/16/02)    |
| FIELD GOALS MADE.....         | 11            | Avery, Terence at Eastern Illinois (11/28/01)  |
|                               | 10            | Avery, Terence at Illinois State (01/12/02)    |
| FIELD GOAL ATT.....           | 18            | Avery, Terence at Eastern Illinois (11/28/01)  |
|                               | 17            | Grimes, Lamar at Southern Illinois (01/19/02)  |
|                               | 17            | Block, Kelyn at Drake University (12/9/01)     |
| FG PCT (min 5 made).....      | .857 ( 6-7 )  | Kante, Djibril at Southern Illinois (01/19/02) |
|                               | .750 ( 6-8 )  | Avery, Terence vs Northern Iowa (01/10/02)     |
|                               | .750 ( 6-8 )  | Kante, Djibril vs Murray State (12/3/01)       |
| 3 PT FG MADE.....             | 8             | Broermann, Matt vs Wichita State (01/16/02)    |
|                               | 4             | Broermann, Matt vs Creighton (2/6/02)          |
|                               | 4             | Howard, Marcus vs Northern Iowa (01/10/02)     |
|                               | 4             | Block, Kelyn at Drake University (12/9/01)     |
| 3 PT FG ATTEMPTS.....         | 11            | Broermann, Matt vs Wichita State (01/16/02)    |
|                               | 9             | Broermann, Matt vs Bowling Green (12/29/01)    |
| 3-PT FG PCT (min 2 made)..... | 1.000 ( 2-2 ) | Broermann, Matt at Wichita State (02/03/02)    |
|                               | .800 ( 4-5 )  | Broermann, Matt vs Creighton (2/6/02)          |
| FREE THROWS MADE.....         | 13            | Kante, Djibril at Wichita State (02/03/02)     |
|                               | 9             | Block, Kelyn vs Ball State (12/22/01)          |
| FREE THROW ATT.....           | 14            | Kante, Djibril at Wichita State (02/03/02)     |
|                               | 13            | Block, Kelyn at Wichita State (02/03/02)       |
|                               | 13            | Kante, Djibril vs SMS (01/27/02)               |
|                               | 13            | Block, Kelyn vs Ball State (12/22/01)          |
| FT PCT (min 5 made).....      | 1.000 ( 6-6 ) | Howard, Marcus vs IUPUI (12/1/01)              |
|                               | 1.000 ( 5-5 ) | Block, Kelyn vs IUPUI (12/1/01)                |
| REBOUNDS.....                 | 14            | Kante, Djibril at Northern Iowa (01/23/02)     |
|                               | 13            | Kante, Djibril vs Evansville (01/05/02)        |
|                               | 13            | Berry, Matt vs IUPUI (12/1/01)                 |
|                               | 13            | Kante, Djibril vs Valparaiso (11/21/01)        |
| ASSISTS.....                  | 9             | Grimes, Lamar vs Northern Iowa (01/10/02)      |
|                               | 7             | Block, Kelyn vs Bowling Green (12/29/01)       |
|                               | 7             | Howard, Marcus vs Murray State (12/3/01)       |
| STEALS.....                   | 5             | Howard, Marcus vs Evansville (01/05/02)        |
|                               | 4             | Grimes, Lamar at Bradley (01/31/02)            |
|                               | 4             | Berry, Matt at Northern Iowa (01/23/02)        |
|                               | 4             | Haywood, Batiste at WYOMING COWBOYS (12/19/01) |
| BLOCKED SHOTS.....            | 4             | Kante, Djibril vs Evansville (01/05/02)        |

## SYCAMORE BASKETBALL NOTES ... PAGE SEVENTEEN

### Indiana State High/Low Analysis (as of Feb. 6, 2002)

#### Opponent - GAME HIGHS

|                            |              |                                 |
|----------------------------|--------------|---------------------------------|
| POINTS.....                | 91           | at Southern Illinois (01/19/02) |
|                            | 87           | at Wichita State (02/03/02)     |
|                            | 85           | at Drake University (12/9/01)   |
|                            | 72           | at WYOMING COWBOYS (12/19/01)   |
| FIELD GOALS MADE.....      | 35           | at Southern Illinois (01/19/02) |
|                            | 28           | at Wichita State (02/03/02)     |
|                            | 28           | at Illinois State (01/12/02)    |
|                            | 28           | at Creighton (12/16/01)         |
|                            | 28           | vs Valparaiso (11/21/01)        |
|                            | 28           | at UIC Flames (11/18/01)        |
| FIELD GOAL ATTEMPTS.....   | 72           | at Southern Illinois (01/19/02) |
|                            | 68           | at UIC Flames (11/18/01)        |
| FIELD GOAL PERCENTAGE..... | .519 (28-54) | at Wichita State (02/03/02)     |
|                            | .491 (28-57) | vs Valparaiso (11/21/01)        |
| 3 PT FIELD GOALS MADE..... | 11           | at Southern Illinois (01/19/02) |
|                            | 11           | at Drake University (12/9/01)   |
| 3 PT FG ATTEMPTS.....      | 29           | at WYOMING COWBOYS (12/19/01)   |
|                            | 24           | at Drake University (12/9/01)   |
| 3 PT FG PERCENTAGE.....    | .550 (11-20) | at Southern Illinois (01/19/02) |
|                            | .476 (10-21) | vs Valparaiso (11/21/01)        |
| FREE THROWS MADE.....      | 27           | at Wichita State (02/03/02)     |
|                            | 20           | at Drake University (12/9/01)   |
| FREE THROW ATTEMPTS.....   | 34           | at Wichita State (02/03/02)     |
|                            | 29           | at Drake University (12/9/01)   |
| FREE THROW PERCENTAGE..... | .846 (11-13) | vs Northern Iowa (01/10/02)     |
|                            | .818 ( 9-11) | at Illinois State (01/12/02)    |
|                            | .818 ( 9-11) | at Creighton (12/16/01)         |
| REBOUNDS.....              | 49           | at Southern Illinois (01/19/02) |
|                            | 47           | at WYOMING COWBOYS (12/19/01)   |
| ASSISTS.....               | 21           | at Wichita State (02/03/02)     |
|                            | 20           | at Southern Illinois (01/19/02) |
|                            | 20           | at WYOMING COWBOYS (12/19/01)   |
|                            | 20           | at UIC Flames (11/18/01)        |
| STEALS.....                | 11           | at Creighton (12/16/01)         |
|                            | 10           | vs Wichita State (01/16/02)     |
| BLOCKED SHOTS.....         | 8            | at WYOMING COWBOYS (12/19/01)   |
|                            | 6            | at Bradley (01/31/02)           |
|                            | 6            | vs Valparaiso (11/21/01)        |
| TURNOVERS.....             | 19           | vs Evansville (01/05/02)        |
|                            | 17           | vs Ball State (12/22/01)        |

#### Opponent - GAME LOWS

|                            |              |                                 |
|----------------------------|--------------|---------------------------------|
| POINTS.....                | 40           | vs Evansville (01/05/02)        |
|                            | 52           | at Eastern Illinois (11/28/01)  |
|                            | 56           | vs IUPUI (12/1/01)              |
|                            | 59           | vs SMS (01/27/02)               |
| FIELD GOALS MADE.....      | 16           | vs Evansville (01/05/02)        |
|                            | 19           | at Eastern Illinois (11/28/01)  |
|                            | 19           | vs SMS (01/27/02)               |
| FIELD GOAL ATTEMPTS.....   | 43           | vs SMS (01/27/02)               |
|                            | 48           | vs Ball State (12/22/01)        |
| FIELD GOAL PERCENTAGE..... | .281 (16-57) | vs Evansville (01/05/02)        |
|                            | .361 (22-61) | vs IUPUI (12/1/01)              |
| 3 PT FIELD GOALS MADE..... | 3            | at Eastern Illinois (11/28/01)  |
|                            | 3            | at Illinois State (01/12/02)    |
|                            | 3            | vs SMS (01/27/02)               |
| 3 PT FG ATTEMPTS.....      | 9            | at Illinois State (01/12/02)    |
|                            | 10           | vs SMS (01/27/02)               |
| 3 PT FG PERCENTAGE.....    | .176 ( 3-17) | at Eastern Illinois (11/28/01)  |
|                            | .238 ( 5-21) | vs Murray State (12/3/01)       |
| FREE THROWS MADE.....      | 2            | vs Evansville (01/05/02)        |
|                            | 5            | vs Valparaiso (11/21/01)        |
| FREE THROW ATTEMPTS.....   | 5            | vs Evansville (01/05/02)        |
|                            | 9            | vs Valparaiso (11/21/01)        |
| FREE THROW PERCENTAGE..... | .400 ( 2-5 ) | vs Evansville (01/05/02)        |
|                            | .476 (10-21) | at Southern Illinois (01/19/02) |
| REBOUNDS.....              | 29           | vs Northern Iowa (01/10/02)     |
|                            | 29           | at Northern Iowa (01/23/02)     |
| ASSISTS.....               | 6            | vs Ball State (12/22/01)        |
|                            | 6            | vs SMS (01/27/02)               |
| STEALS.....                | 4            | vs Evansville (01/05/02)        |
|                            | 4            | vs SMS (01/27/02)               |
| TURNOVERS.....             | 7            | at Drake University (12/9/01)   |
|                            | 9            | at Butler (11/25/01)            |