



State of Illinois
Department of Agriculture
Bureau of Environmental Programs

***ELEVENTH AMENDMENT
TO THE
EMERALD ASH BORER INTERIOR QUARANTINE***

Pursuant to the Insect Pest and Plant Disease Act (505 ILCS 90/1 et seq.), the Director of Agriculture has determined that it is necessary to quarantine portions of the State in order to prevent the spread of a dangerous plant pest known as the EMERALD ASH BORER (*Agrilus planipennis* Fairmaire). This plant pest, a highly destructive pest of trees, has been introduced into the State of Illinois and incipient infestations have been identified in the state.

The quarantine established by the Director of Agriculture on July 18, 2006, amended on November 9, 2006, January 12, 2007, April 27, 2007, July 19, 2007, November 5, 2008, April 13, 2010, October 26, 2010, November 10, 2011, December 10, 2012 and November 1, 2013, is hereby amended as follows:

Section III. Regulated Areas, shall read:

- “1. The entire Counties of Boone, Bureau, Carroll, Champaign, Christian, Clark, Coles, Cook, Cumberland, DeKalb, Dewitt, Douglas, DuPage, Edgar, Effingham, Fayette, Ford, Franklin, Fulton, Grundy, Henderson, Henry, Iroquois, Jefferson, Jo Daviess, Kane, Kankakee, Kendall, Knox, Lake, LaSalle, Lee, Livingston, Logan, Macon, Marion, Marshall, Mason, McHenry, McLean, Menard, Mercer, Moultrie, Ogle, Peoria, Perry, Piatt, Putnam, Rock Island, Sangamon, Shelby, Stark, Stephenson, Tazewell, Vermillion, Warren, Whiteside, Will, Williamson, Winnebago, and Woodford; and
2. Any other area within the State of Illinois where the presence of the Emerald Ash Borer (*Agrilus planipennis* Fairmaire) is confirmed in the future.”

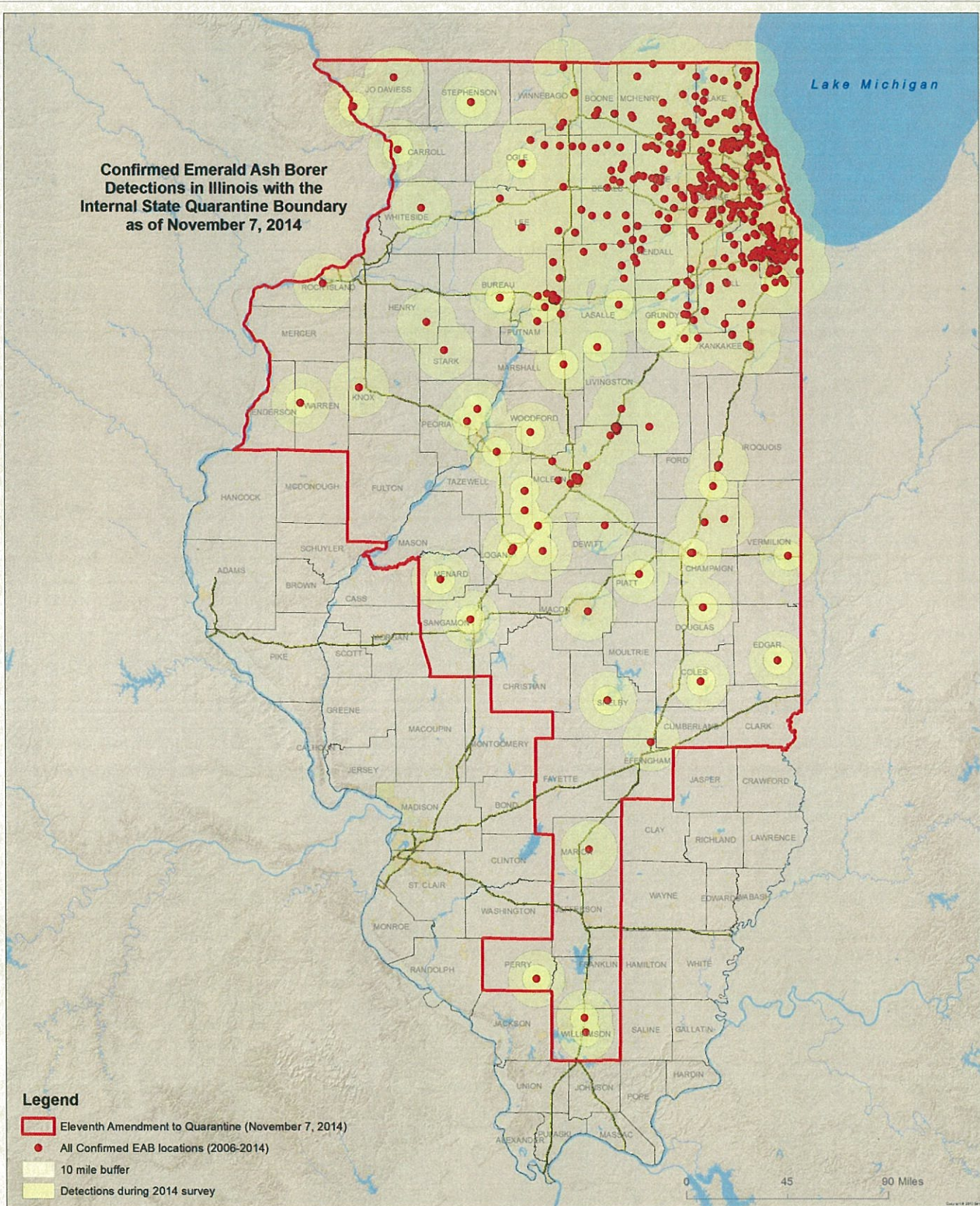
These amendments to the Quarantine shall be effective on or after this 7th day of **November 2014**. All other provisions of the original quarantine, as previously amended, shall remain in full force and effect.



A handwritten signature in blue ink that reads "Robert F. Flider".

Robert F. Flider, Director
Illinois Department of Agriculture

**Confirmed Emerald Ash Borer
 Detections in Illinois with the
 Internal State Quarantine Boundary
 as of November 7, 2014**



Legend

- Eleventh Amendment to Quarantine (November 7, 2014)
- All Confirmed EAB locations (2008-2014)
- 10 mile buffer
- Detections during 2014 survey



Warren D. Goetsch, P.E., Chief
 Bureau of Environmental Programs
 Division of Natural Resources

**Confirmed Emerald Ash Borer
 Detections in Illinois with the
 Internal State Quarantine Boundary
 as of November 7, 2014**

